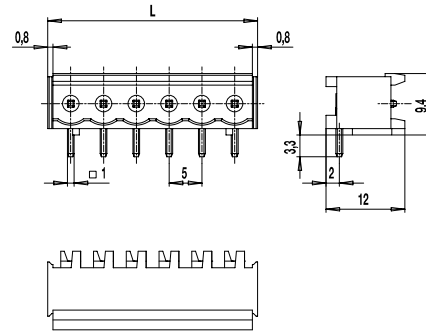
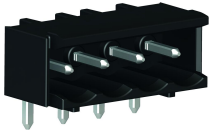
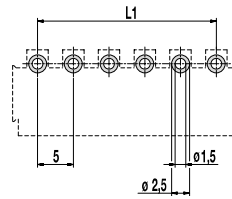


120-M-211-THR

Pin strip for THR
 Plug-in direction parallel to PCB, with side walls



PCB LAYOUT



L1 = (No. of poles - 1) x pitch
 Solder paste thickness: 0,15 - 0,2 mm
 Solder pad diameter: ø 2,5 mm

GENERAL INFORMATION

Pitch	5 mm
No. of poles	2 - 12
Usable with	all plug connectors of series 120
Additional Information	The 120-M-THR pin strips are, like the conventional products, available with straight or angled soldering pins for vertical or parallel plugging of the mating parts, whereby all plugs of the connecta series 120-A, -D, and -F can be used.

TECHNICAL DATA

Overvoltage Category	III	III	II
Pollution Severity Level	3	2	2
Rated Voltage	250 V	320 V	630 V
Rated Impulse Voltage	4 kV	4 kV	4 kV
Rated Insulation Voltage	250 V acc. to EN 60998-1		
Rated Current	12 A		
Soldering process	Wave solder & reflow solder		
Hole in PCB	ø 1,5 mm		
PCB thickness	Wave solder max. 1,6 mm; reflow solder 1,6 - 3,2 mm		

APPROVALS

	Current [A]	Voltage [V]	Group	AWG	[Nm]
	15	300	B		
	10	300	D		
	15	300	B		
	10	300	D, E		

MATERIAL

Moulding	PA HT, black, V-0
Comparative Tracking Index	CTI ≥ 600
Insulating Group	I
Temperature Range	-40°C up to 120°C; reflow solder temperature peak max. 255°C acc. to DIN EN 61760-1
Solder pin	1,0 x 1,0 mm; tin plated brass

OPTIONS / ACCESSORIES

- Consecutive numbering
- Special marking according to drawing
- Self-adhesive marking strip BST-5,00 [1]
- Special packaging on request: Tape-on-Reel - Tray - Bar magazine

[1] To be fitted after reflow soldering process

CONFIGURATIONS

Poles	Part number	Article number	Length (L)	Packaging	PU
2	120-M-211-THR/02	10.806.352	12,00 mm	Box	200
3	120-M-211-THR/03	10.806.353	17,00 mm	Box	200
4	120-M-211-THR/04	10.806.354	22,00 mm	Box	100
5	120-M-211-THR/05	10.806.355	27,00 mm	Box	100
6	120-M-211-THR/06	10.806.356	32,00 mm	Box	100

further number of poles on request

