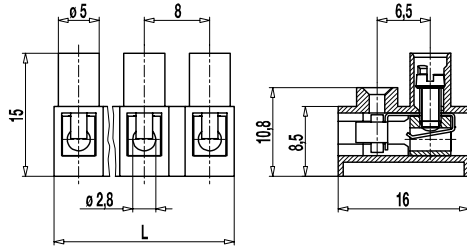
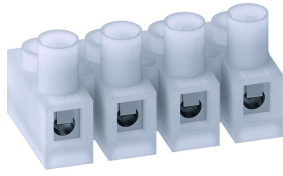


## 302-FLW-DS

Plug-in terminal strip

Screw connection & socket with clamping spring, Plug-in direction vertical



The plug-in terminal strip 302-FLW-DS in 8 mm pitch is available with 2 to 12 poles. It is well suited for applications where space is limited.

It has one screw connection per pole and one vertical plug connection for a terminal strip with pins.

302-FLW-DS terminal strips unite contact spring with wire protector which offers good connection performance for applications requiring small plugging and pulling forces and low contact resistance. The wire protection reliably prevents damage to flexible wires by the turning screw.

The funnel-shaped insertion bushings guarantee perfect pin guidance and optimum contact protection.

Plug-in terminal strips 302-SV or 302-SVG create a plug connection where the connection leads are located in a 90° angle to each other. That way, challenges of limited mounting space can be resolved.

These terminal strips can be screw-mounted on a substrate.

### Part Numbers

No. of poles	302-FLW-DS	Length	PU
2	32.820.041	15,00	250
3	33.820.041	23,00	250
4	34.820.041	31,00	250
6	36.820.041	47,00	80
8	38.820.041	63,00	50
11	41.820.041	87,00	40
12	42.820.041	94,00	40

further number of poles on request

### General Information

Pitch	8 mm
No. of poles	2 - 12
Usable with	302-SV(-DS), 302-SVG(-DS)
Areas of application	This plug connector is well suited for applications that require to easily open and close not energised circuits.



### Technical Data

Clamping Range	solid / flexible / AWG 0,34 - 2,5 mm <sup>2</sup> / 0,34 - 1,5 mm <sup>2</sup> / 22 - 14 AWG		
Rated Cross Section	1,5 mm <sup>2</sup>		
Wire Stripping Length	7 mm ± 0,5 mm		
Overvoltage Category	III	III	II
Pollution Severity Level	3	2	2
Rated Voltage	160 V	160 V	320 V
Rated Impulse Voltage	2,5 kV	2,5 kV	2,5 kV
Rated Insulation Voltage	130 V acc. to EN 60998-1		
Rated Current	6 A		
Torque	0,4 Nm		
Other specifications	Rated values apply to use in combination with 302-SV(-DS).		

### Material

Moulding	PA, natural, V-2
Comparative Tracking Index	CTI ≥ 600
Insulating Group	I
Temperature Range	-40°C up to 100°C
Terminal Body	Tin plated brass
Screw	M2,6; zinc plated steel, blue passivated
Wire protector	Tin plated tin bronze
Plug	Tin plated brass

### Approvals

	Current [A]	Voltage [V]	Group	AWG	[Nm]
	10	300	B,D	22 - 14	0,4
	10	300	B,D,E	26 - 14	0,4

### Options / Accessories

- Marking options on the screw guides
- Jumper 302-J