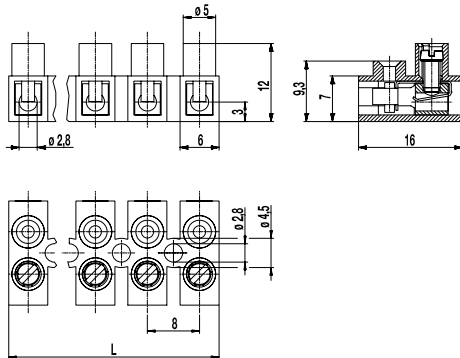
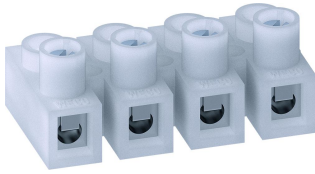


## 302-NFLW-DS

Plug-in terminal strip

Screw connection & socket with clamping spring, low profile version



The plug-in terminal strip 302-NFLW-DS, low version, is available in 8 mm pitch with 2 to 12 poles.

It has one screw connection per pole and one vertical plug connection to a terminal strip with pins.

Contact spring and wire protector form one unit and offers good connection performance for applications requiring small plugging and pulling forces and low contact resistance. The wire protection reliably prevents damage to flexible wires by the turning screw.

The funnel-shaped insertion bushings guarantee perfect pin guidance and optimum contact protection.

The "N"-variant only differs from the standard 302-FLW-DS version by the 12 mm overall height (i.e. the moulding height is 3 mm lower). This allows for a more compact angular plug connection to the 302-NSV terminal strip. Note the shortened clearance and creepage distances.

Plug-in terminal strip 302-NSLW creates a plug connection with wire entrances located parallel on top of each other which requires relatively little mounting space. That is why tensile forces on the wires have no direct effect on the contact performance.

This arrangement does not allow for the connection of an earth lead.

### Part Numbers

| No. of poles | 302-NFLW-DS | Length | PU  |
|--------------|-------------|--------|-----|
| 2            | 32.820.038  | 15,00  | 250 |
| 3            | 33.820.038  | 23,00  | 250 |
| 4            | 34.820.038  | 31,00  | 200 |
| 5            | 35.820.038  | 39,00  | 100 |
| 6            | 36.820.038  | 47,00  | 80  |
| 7            | 37.820.038  | 55,00  | 80  |
| 8            | 38.820.038  | 63,00  | 80  |
| 9            | 39.820.038  | 71,00  | 60  |
| 10           | 40.820.038  | 79,00  | 50  |
| 11           | 41.820.038  | 87,00  | 50  |
| 12           | 42.820.038  | 94,00  | 40  |

### General Information

|                      |   |
|----------------------|---|
| Pitch                | 8 mm  |
| No. of poles         | 2 - 12  |
| Usable with          | 302-NSV(-DS), 302-NSLW(-HDS)  |
| Areas of application | This plug connector is well suited for applications that require to easily open and close not energised circuits. |



### Technical Data

|                          |  |       |       |
|--------------------------|--|-------|-------|
| Clamping Range           | <i>solid / flexible / AWG</i><br>0,75 - 2,5 mm <sup>2</sup> / 0,75 - 1,5 mm <sup>2</sup> / 18 - 16 AWG |       |       |
| Rated Cross Section      | 1,5 mm <sup>2</sup>  |       |       |
| Wire Stripping Length    | 7 mm ± 0,5 mm  |       |       |
| Overvoltage Category     | III  | III   | II    |
| Pollution Severity Level | 3  | 2     | 2     |
| Rated Voltage            | 250 V  | 320 V | 630 V |
| Rated Impulse Voltage    | 4 kV   | 4 kV  | 4 kV  |
| Rated Insulation Voltage | 250 V acc. to EN 60998-1   |       |       |
| Rated Current            | 6 A  |       |       |
| Torque                   | 0,4 Nm   |       |       |
| Other specifications     | Rated values apply to use in combination with 302-NSLW(-HDS).  |       |       |

### Material

|                            |  |
|----------------------------|--|
| Moulding                   | PA, natural, V-2                         |
| Comparative Tracking Index | CTI ≥ 600                                |
| Insulating Group           | I  |
| Temperature Range          | -40°C up to 100°C                        |
| Terminal Body              | Nickel plated brass                      |
| Screw                      | M2,6; zinc plated steel, blue passivated |
| Wire protector             | Tin plated tin bronze                    |
| Spring                     | Tin plated tin bronze                    |

### Approvals

|   | Current [A] | Voltage [V] | Group | AWG     | [Nm] |
|---|-------------|-------------|-------|---------|------|
|  | 10          | 300         | B,D   | 22 - 14 | 0,4  |
|  | 10          | 300         | B,D,E | 26 - 14 | 0,4  |

### Options / Accessories

- Marking options on the screw guides
- Jumper 302-J