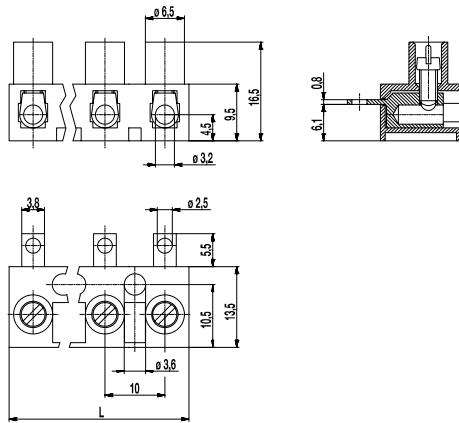
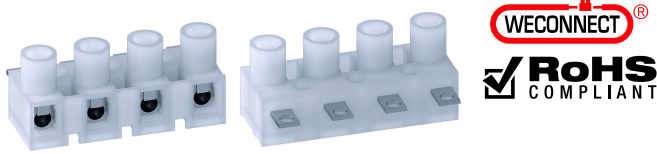


## 321-LFS(-DS)

Screw/solder terminal strip

Screw/solder tag connection, side of solder tag closed, pottable



The screw/solder terminal strip 321-LFS in 10 mm pitch was designed for larger cross-sections than version 302-LF-DS. It is available with 1 to 12 poles. Mouldings of this type are encapsulated on the solder tag side and therefore particularly well suited for potting. Socket and solder tag are manufactured in one piece.

The screws are ready to be wired, secured against self-loosening and captive.

These strips can be combined with plug-in terminal strip 322-SV by plugging the pins into the sockets and screwing them tight.

The wire protector of the "DS"-version reliably prevents damage to multi-wire flexible conductors by the turning screw. These terminal strips can be screw-mounted on a substrate.

### Part Numbers

| No. of poles | 321-LFS    | 321-LFS-DS | Length | PU   |
|--------------|------------|------------|--------|------|
| 1            | 11.821.020 | 31.821.020 | 8,00   | 3000 |
| 2            | 12.821.020 | 32.821.020 | 18,00  | 1000 |
| 3            | 13.821.020 | 33.821.020 | 28,00  | 200  |
| 4            | 14.821.020 | 34.821.020 | 38,00  | 200  |
| 5            | 15.821.020 | 35.821.020 | 48,00  | 100  |
| 6            | 16.821.020 | 36.821.020 | 58,00  | 100  |
| 7            | 17.821.020 | 37.821.020 | 68,00  | 70   |
| 8            | 18.821.020 | 38.821.020 | 78,00  | 70   |
| 9            | 19.821.020 | 39.821.020 | 88,00  | 60   |
| 10           | 20.821.020 | 40.821.020 | 98,00  | 50   |
| 11           | 21.821.020 | 41.821.020 | 108,00 | 50   |
| 12           | 22.821.020 | 42.821.020 | 117,00 | 50   |

further number of poles on request

### General Information

|              |        |
|--------------|--------|
| Pitch        | 10 mm  |
| No. of poles | 1 - 12 |


### Technical Data

|                          |   |       |        |
|--------------------------|---|-------|--------|
| Clamping Range           | <i>solid / flexible / AWG</i>                                     |       |        |
| without wire protector   | 0,75 - 6 mm <sup>2</sup> / 0,75 - 4 mm <sup>2</sup> / 18 - 12 AWG |       |        |
| with wire protector      | 0,5 - 4 mm <sup>2</sup> / 0,5 - 2,5 mm <sup>2</sup> / 20 - 12 AWG |       |        |
| Rated Cross Section      | 2,5 mm <sup>2</sup>   |       |        |
| Wire Stripping Length    | 7 mm ± 0,5 mm   |       |        |
| Overvoltage Category     | III   | III   | II     |
| Pollution Severity Level | 3   | 2     | 2      |
| Rated Voltage            | 400 V   | 630 V | 1000 V |
| Rated Impulse Voltage    | 6 kV  | 6 kV  | 6 kV   |
| Rated Insulation Voltage | 450 V acc. to EN 60998-1  |       |        |
| Rated Current            | 26 A  |       |        |
| Torque                   | 0,5 Nm  |       |        |

### Material

|                            |  |
|----------------------------|--|
| Moulding                   | PA, natural, V-2                       |
| Comparative Tracking Index | CTI ≥ 600                              |
| Insulating Group           | I                                      |
| Temperature Range          | -40°C up to 100°C                      |
| Terminal Body              | Tin plated brass                       |
| Screw                      | M3; zinc plated steel, blue passivated |
| Wire protector             | Tin plated tin bronze                  |

### Approvals

|   | Current [A] | Voltage [V] | Group | AWG       | [Nm] |
|---|-------------|-------------|-------|-----------|------|
|  | 20          | 300         | B     | 26-10 [1] | 0,51 |
|   | 10          | 300         | D,E   | 26-10 [1] | 0,51 |

[1] for 321-LFS-DS: 26-12 AWG

### Options / Accessories

- Marking options on the screw guides
- Cover caps A-323 und base plate B-323 for additional contact protection
- Insulation receptacles ISO-110
- Moulding made of special polyamide for e.g. household appliances
- Up to 16 poles possible