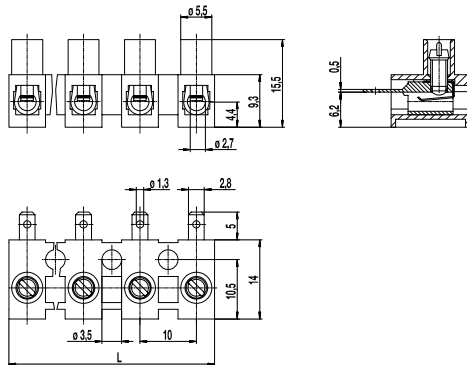
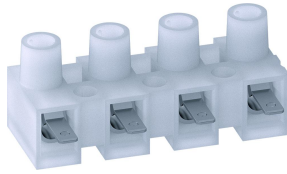


## 322-A-2,8(-DS)

Tab/screw connector  
with tab A 2,8



The tab connector block 322-A-2,8 in 10 mm pitch is available with 1 to 12 poles. These connector strips are a combination of screw and tab connectors. They can be used to connect equipment to the grid and are well suited for many other applications.

After slipping on the tab receptacles, their ends protrude approx. 12,5 mm from the moulding. The screws are ready to be wired, secured against self-loosening and captive.

This tab connector block can be combined with our plug-in terminal strip 322-SV - the plugs are simply inserted in the sockets and subsequently screwed tight.

The wire protector of the "DS"-version reliably prevents damage to multi-wire flexible conductors by the turning screw. These terminal strips can be screw-mounted on a substrate.

### Part Numbers

No. of poles	322-A-2,8	322-A-2,8-DS	Length	PU
1	11.821.014	31.821.014	8,00	2000
2	12.821.014	32.821.014	18,00	2000
3	13.821.014	33.821.014	28,00	1000
4	14.821.014	34.821.014	38,00	800
5	15.821.014	35.821.014	48,00	500
6	16.821.014	36.821.014	58,00	100
7	17.821.014	37.821.014	68,00	70
8	18.821.014	38.821.014	78,00	70
9	19.821.014	39.821.014	88,00	60
10	20.821.014	40.821.014	98,00	50
11	21.821.014	41.821.014	108,00	50
12	22.821.014	42.821.014	117,00	50

### General Information

Pitch	10 mm
No. of poles	1 - 12
Accessories	322-SV


### Technical Data

Clamping Range	<i>solid / flexible / AWG</i>		
<i>without wire protector</i>	0,5 - 4 mm <sup>2</sup> / 0,5 - 2,5 mm <sup>2</sup> / 20 - 12 AWG		
<i>with wire protector</i>	0,34 - 2,5 mm <sup>2</sup> / 0,34 - 2,5 mm <sup>2</sup> / 22 - 14 AWG		
Rated Cross Section	[1] 2,5 mm <sup>2</sup> ; [2] 1 mm <sup>2</sup>		
Overvoltage Category	III	III	II
Pollution Severity Level	3	2	2
Rated Voltage	400 V	630 V	1000 V
Rated Impulse Voltage	6 kV	6 kV	6 kV
Rated Insulation Voltage	450 V acc. to EN 60998-1		
Rated Current	7,5 A with receptacle 2,8; wire 1 mm <sup>2</sup> (16 AWG)		
Torque	0,5 Nm		

### Material

Moulding	PA, natural, V-2
Comparative Tracking Index	CTI ≥ 600
Insulating Group	I
Temperature Range	-40°C up to 100°C
Terminal Body	Nickel plated brass
Screw	M3; zinc plated steel, blue passivated
Wire protector	Tin plated tin bronze

### Approvals

	Current [A]	Voltage [V]	Group	AWG	[Nm]
	6	300	B,D,E	22 - 10	0,51

### Options / Accessories

- Marking options on the screw guides
- Marking strips BST-322
- Cover caps A-323 und base plate B-323 for additional contact protection

[1] Screw side

[2] Plug-in side