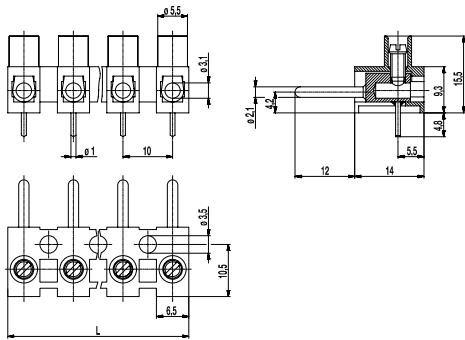
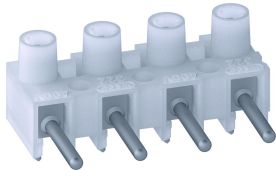


322-SVG

Plug-in terminal strip
Screw connection & pin, with solder pin



The plug-in terminal strip 322-SVG with a pitch of 10 mm is equipped with a solder pin and designed for the use on PCBs. Due to large pitch and moulding shape, this version is also well suited for applications using higher voltages.

When used in combination with a plug-in terminal strip 323-FB, the contact pressure is applied by a stainless-steel spring thus providing excellent electrical contact.

In plugged condition, all metal components are protected against accidental contact, except for the solder pins.
The screws are captive, vibration-proof and secured against self-loosening.
In addition, the terminal strips can be screw-mounted onto the PCB.
The plug-in connector can be used as three-way contact.

Part Numbers

No. of poles	322-SVG	Length	PU
2	72.821.013	18,00	250
3	73.821.013	28,00	250
4	74.821.013	38,00	200
5	75.821.013	48,00	100
6	76.821.013	58,00	100
7	77.821.013	68,00	70
8	78.821.013	78,00	70
9	79.821.013	88,00	60
10	80.821.013	98,00	50
11	81.821.013	108,00	50
12	82.821.013	117,00	50

General Information

Pitch	10 mm
No. of poles	2 - 12
Usable with	323-FB(-HDS)

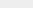
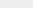
■ Technical Data

Clamping Range	<i>solid / flexible / AWG</i> 0,5 - 4 mm ² / 0,5 - 2,5 mm ² / 20 - 12 AWG		
Rated Cross Section	2,5 mm ²		
Wire Stripping Length	5 mm ± 0,5 mm		
Overvoltage Category	III	III	II
Pollution Severity Level	3	2	2
Rated Voltage	500 V	630 V	1000 V
Rated Impulse Voltage	6 kV	6 kV	6 kV
Rated Insulation Voltage	750 V acc. to EN 60998-1		
Rated Current	10 A		
Hole in PCB	ø 1,3 mm		
Other specifications	Rated values apply to use in combination with 323-FB(-HDS).		

Material

Moulding	PA, natural, V-2
Comparative Tracking Index	CTI \geq 600
Insulating Group	I
Temperature Range	-40°C up to 100°C
Terminal Body	Tin plated brass
Screw	M3; zinc plated steel, blue passivated
Solder pin	\varnothing 1 mm; tin plated copper
Spring	Stainless strip steel

■ Approvals

	Current [A]	Voltage [V]	Group	AWG	[Nm]
	20	300	B	18 - 12	0,51
	15	300	B	26-10 [1]	0,51
	10	150	D,E	26-10 [1]	0,51

[1] in combination with 323-FB-HDS: 26 - 12 AWG

Options / Accessories

- Marking strips BST-322
- Longer solder pins up to 75 mm
- Leading plug for the protective conductor pole