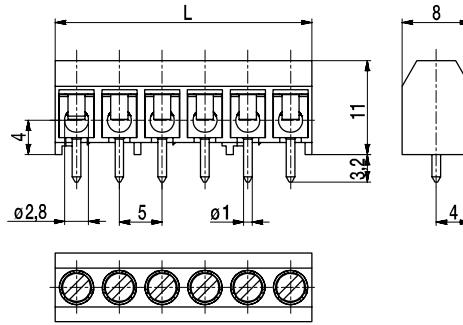
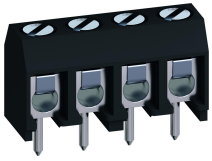
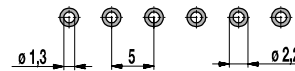


950-THR(-DS)

PCB connector for THR
Screw connection



PCB LAYOUT



Solder paste thickness:
0,15 - 0,2 mm
Solder pad diameter: \varnothing 2,2 mm

GENERAL INFORMATION

Pitch	5 mm
No. of poles	2 - 12

TECHNICAL DATA

Clamping Range	solid / stranded / AWG		
without wire protector	0,75 - 4 mm ² / 0,75 - 2,5 mm ² / 18 - 12 AWG		
with wire protector	0,34 - 2,5 mm ² / 0,34 - 2,5 mm ² / 22 - 14 AWG		
Rated Cross Section	1,5 mm ²		
Wire Stripping Length	6 mm \pm 0,5 mm		
Overvoltage Category	III	III	II
Pollution Severity Level	3	2	2
Rated Voltage	160 V	160 V	320 V
Rated Impulse Voltage	2,5 kV	2,5 kV	2,5 kV
Rated Insulation Voltage	250 V acc. to EN 60998-1		
Rated Current	17,5 A		
Soldering process	Wave solder & reflow solder		
Hole in PCB	\varnothing 1,3 mm		
PCB thickness	Wave solder max. 1,6 mm; reflow solder 1,6 - 3,2 mm		
Torque	0,4 Nm		

APPROVALS

	Current [A]	Voltage [V]	Group	AWG	[Nm]
	15	300	B	26 - 14	0,4
	15	300	B	26 - 14	0,4

MATERIAL

Moulding	PA HT, black, V-0
Comparative Tracking Index	CTI \geq 600
Insulating Group	I
Temperature Range	-40°C up to 120°C; reflow solder temperature peak max. 255°C acc. to DIN EN 61760-1
Terminal body	Tin plated brass
Screw	M2,6; zinc plated steel, blue passivated
Solder pin	\varnothing 1 mm; tin plated brass
Wire protector	Tin plated tin bronze

OPTIONS / ACCESSORIES

- Consecutive numbering
- Special marking according to drawing
- Self-adhesive marking strip BST-5,00 [1]
- Other solder pin lengths on request

[1] To be fitted after reflow soldering process

CONFIGURATIONS

Poles	Part number	Article number	Part number	Article number	Length (L)	Packaging	PU	Tape Width	Tape Height
2	950-THR/02	10.879.102	950-THR-DS/02	20.879.102	10,00 mm	Box	250		
3	950-THR/03	10.879.103	950-THR-DS/03	20.879.103	15,00 mm	Box	250		
4	950-THR/04	10.879.104	950-THR-DS/04	20.879.104	20,00 mm	Box	100		
5	950-THR/05	10.879.105	950-THR-DS/05	20.879.105	25,00 mm	Box	100		
6	950-THR/06	10.879.106	950-THR-DS/06	20.879.106	30,00 mm	Box	100		
2	950-THR/02-T&R		950-THR-DS/02-T&R	20.879.102.A00	10,00 mm	Tape-on-Reel	300	32 mm	15,7 mm
6	950-THR/06-T&R		950-THR-DS/06-T&R	20.879.106.A00	30,00 mm	Tape-on-Reel	300	56 mm	15,7 mm

further number of poles on request

