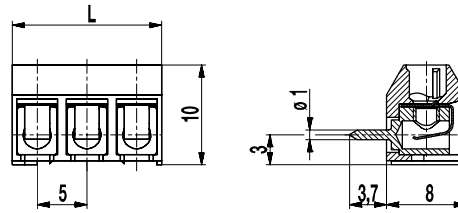


# 951-FB

Socket terminal strip  
 Plug connection, plug-in direction vertical to PCB



## GENERAL INFORMATION

Pitch	5 mm
No. of poles	2 - 32
Usable with	plug connector 951-SV

## TECHNICAL DATA

Overvoltage Category	III	III	II
Pollution Severity Level	3	2	2
Rated Voltage	160 V	160 V	320 V
Rated Impulse Voltage	2,5 kV	2,5 kV	2,5 kV
Rated Insulation Voltage	130 V acc. to EN 60998-1		
Rated Current	6 A		
Hole in PCB	ø 1,3 mm		
Other specifications	2-8 poles types are "no-flame" acc. to glow-wire test		

## APPROVALS

	Current [A]	Voltage [V]	Group	AWG	[Nm]
	7	300	B		
	7	300	B		

## MATERIAL

Moulding	PA, grey, V-0
Comparative Tracking Index	2-8 poles: CTI ≥ 600; 9-32 poles: CTI 400
Insulating Group	2-8 poles: I; 9-32 poles: II
Temperature Range	-40°C up to 100°C
Terminal body	Tin plated brass
Solder pin	ø 1 mm; tin plated brass
Spring	Stainless strip steel

## OPTIONS / ACCESSORIES

- Consecutive numbering
- Special marking according to drawing
- Self-adhesive marking strip BST-5,00
- Pitch of 10 mm for larger clearance and creepage distances
- Version with lateral latching elements

## CONFIGURATIONS

Poles	Part number	Article number	Length (L)	Packaging	PU
2	951-FB/02	85.871.012	10,00 mm	Box	250
3	951-FB/03	85.871.083	15,00 mm	Box	250
4	951-FB/04	85.871.084	20,00 mm	Box	200
5	951-FB/05	85.871.085	25,00 mm	Box	100
6	951-FB/06	85.871.086	30,00 mm	Box	100

