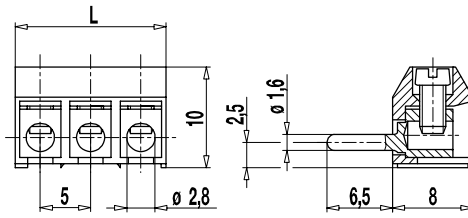


951-SV(-DS)

Plug connector
Screw connection, pin \varnothing 1,6 mm



GENERAL INFORMATION

Pitch	5 mm
No. of poles	2 - 32
Usable with	plug connectors 950-FB, 951-FB, 971-FBS(-DS)

TECHNICAL DATA

Clamping Range	<i>solid / stranded / AWG</i>		
<i>without wire protector</i>	0,75 - 4 mm ² / 0,75 - 2,5 mm ² / 18 - 12 AWG		
<i>with wire protector</i>	0,34 - 2,5 mm ² / 0,34 - 2,5 mm ² / 22 - 14 AWG		
Rated Cross Section	1,5 mm ²		
Wire Stripping Length	5 mm \pm 0,5 mm		
Overvoltage Category	III	III	II
Pollution Severity Level	3	2	2
Rated Voltage	160 V	160 V	320 V
Rated Impulse Voltage	2,5 kV	2,5 kV	2,5 kV
Rated Current	6 A		
Torque	0,4 Nm		
Other specifications	2-8 poles types are "no-flame" acc. to glow-wire test.		

APPROVALS

	Current [A]	Voltage [V]	Group	AWG	[Nm]
	7	300	B	26 - 14	0,4
	7	300	B	26 - 14	0,4
	Current [A]	Voltage [V]	mm ²		
	13,5	160	1,5 [1]		

CONFIGURATIONS

Poles	Part number	Article number	Part number	Article number	Length (L)	Packaging	PU
2	951-SV/02	80.871.012	951-SV-DS/02	86.871.012	10,00 mm	Box	250
3	951-SV/03	80.871.083	951-SV-DS/03	86.871.083	15,00 mm	Box	250
4	951-SV/04	80.871.084	951-SV-DS/04	86.871.084	20,00 mm	Box	200
5	951-SV/05	80.871.085	951-SV-DS/05	86.871.085	25,00 mm	Box	100
6	951-SV/06	80.871.086	951-SV-DS/06	86.871.086	30,00 mm	Box	100

MATERIAL

Moulding	PA, grey, V-0
Comparative Tracking Index	2-8 poles: CTI \geq 600; 9-32 poles: CTI 400
Insulating Group	2-8 poles: I; 9-32 poles: II
Temperature Range	-40°C up to 100°C
Terminal body	Tin plated brass
Screw	M2,6; zinc plated steel, blue passivated
Wire protector	Tin plated tin bronze
Plug	\varnothing 1,6 mm; tin plated brass

OPTIONS / ACCESSORIES

- Consecutive numbering
- Special marking according to drawing
- Self-adhesive marking strip BST-5,00
- Pitch of 10 mm for larger clearance and creepage distances
- Version with lateral fastening flanges (951-B-SV(-DS))

[1] Acc. to IEC 60947-7-4 und IEC 60947-1

