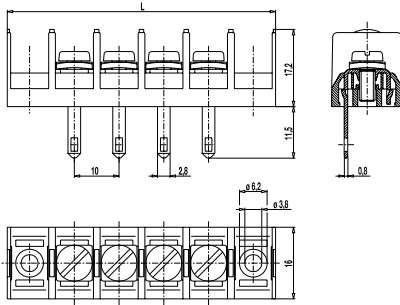
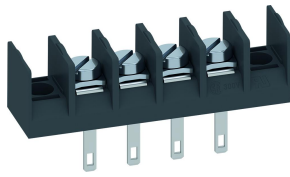


## 983-ML-2,8

Screw/solder connector block  
with soldering tags



Screw/solder connector block 983-ML-2,8 in 10 mm pitch is available in 2- to 12-pole design and can be mounted side-by-side in nominal pitch. This connector is based on our series 983 terminal strip.

The lead connection is designed as head contact terminal with M4 screws. Screws and square washers are movably connected. The square washers are mounted in a non-twist arrangement. For an easier connection of the lead, the washer automatically moves up when the screw is loosened.

One solder tag (width 2,8 mm) per pole is located on the soldering side.

### Part Numbers

No. of poles	983-ML-2,8	Length	PU
2	46.873.804	40,00	100
3	46.873.805	50,00	100
4	46.873.806	60,00	100
5	46.873.807	70,00	100
6	46.873.808	80,00	100
7	46.873.809	90,00	50
8	46.873.810	100,00	50
9	46.873.811	110,00	50
10	46.873.812	120,00	50
11	46.873.813	130,00	50
12	46.873.814	140,00	50

further number of poles on request

### General Information

Pitch	10 mm
No. of poles	2 - 12
Areas of application	Wall bushings



### Technical Data

Clamping Range	<i>solid / flexible / AWG</i> 0,5 - 2,5 mm <sup>2</sup> / 0,5 - 2,5 mm <sup>2</sup> / 20 - 12 AWG
Rated Cross Section	2,5 mm <sup>2</sup> [1]
Wire Stripping Length	8,5 mm
Overvoltage Category	III
Pollution Severity Level	3
Rated Voltage	320 V
Rated Impulse Voltage	4 kV
Rated Insulation Voltage	450 V acc. to EN 60998-1
Rated Current	17,5 A (wire 1,5 mm <sup>2</sup> at soldering tag)
Torque	1,2 Nm
Other specifications	Per pole two wires of identical cross-section can be connected.

### Material

Moulding	PA, grey, V-0
Comparative Tracking Index	CTI > 600
Insulating Group	I
Temperature Range	-40°C up to 100°C
Terminal Body	Tin plated brass
Screw	M4; zinc plated steel, blue passivated

### Approvals

	Current [A]	Voltage [V]	Group	AWG	[Nm]
	20	300	B	20 - 12	1,13
	20 10	300 300	B D,E	20 - 12 20 - 12	1,13 1,13

### Options / Accessories

- Consecutive numbering
- Special marking according to drawing
- Self-adhesive marking strip BST-10,00
- Version for printed circuits (with solder connection), see type 983-FS/-FD
- Crosshead screws on request
- Tab versions available instead of screw connections
- Bushing and mounting bases are available upon request
- Housings with backwalls

[1] Screw side