

**WECO**<sup>®</sup>

## Unisolated terminals

and ceramic components for highest expectations

### Challenging of temperature and resistance in corrosive environments.

Only if materials can withstand ambient temperatures and current-induced inherent heat without any problems, you will be satisfied with the reliability and safety that our products deliver for your applications.

Safety naturally includes the certification and compliance with international standards. WECO stands for an impeccable and seamless documentation.

With almost 100 years of experience in the world of connectors, WECO is the supplier for most reliable and superior components, which are characterized by highest quality and longest durability.

We are your worldwide partner for standard products and also for customer specific solutions in various applications.

### UCLASSIFICATION

- Tested and documented measurement results
- Certified for all applicable environmental conditions
- Suitable for the most extreme ambient temperatures: Flame-, heat- and corrosion-resistant
- Absolute humidity absorption resilience

### VERSATILITY

- Developed for the most adverse conditions: UV-resistant, corrosion- and aging-resistant, isolation-optimized and safe even in tough environments
- Easy and absolutely safe connection technology
- Also available in certified explosion-proof design

### SPECIAL REQUIREMENTS

- Suitable for hot-glue-devices and heating ovens of all types
- Perfect for motors, machines and products in the heavy industry and sectors with particularly demanding application conditions

ADAPTABILITY.  
RELIABILITY.  
PERFORMANCE.





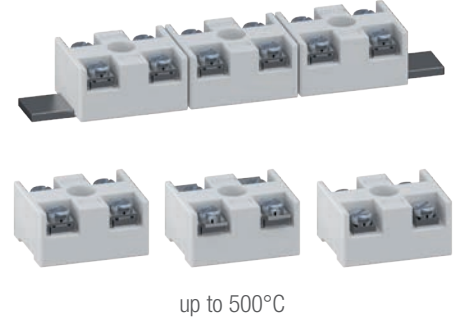
# Developing a new application with high-temperature range?

High temperatures or extremely demanding environments are no problem for WECO products. Benefit from the specialist with nearly 100 years of experience in the field!

## CONNECTORS MADE OF CERAMICS



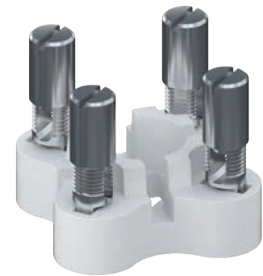
## RAIL-MOUNTED CONNECTORS



## MOTOR TERMINAL BOARDS



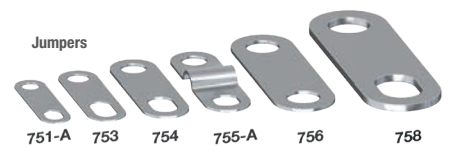
## NAUTICAL CONNECTORS



## SECURED TERMINALS WITH ATEX



## ACCESSORIES



## DO YOU WANT TO DELIVER A CURRENT PROJECT OF INDUSTRIAL AUTOMATION AT OPTIMIZED COSTS?

WECO is your partner for the implementation of industrial projects with minimal costs, best and most durable products and state-of-the-art safety standards!

- Flawless thanks to best base materials
- No corrosion or other quality- or functionality-related restrictions
- Solid or flexible conductors up to 35 mm<sup>2</sup> / 2 AWG
- Current strength of up to 160 A
- Voltage strength of up to 600 V
- Standard screws made of surface-hardened steel, optionally tempered brass or stainless steel



Marine-approved

For roughest environmental conditions

Safety made easy

Customized solutions

[wecoconnectors.com](http://wecoconnectors.com)



© Copyright 2019 by WECO. All rights reserved. WECO® is a brand of the WECO Group. Information provided in this document may be changed without prior notice. Unisolated terminals and ceramic components | 87 955 102 | EN.R2.12.2019