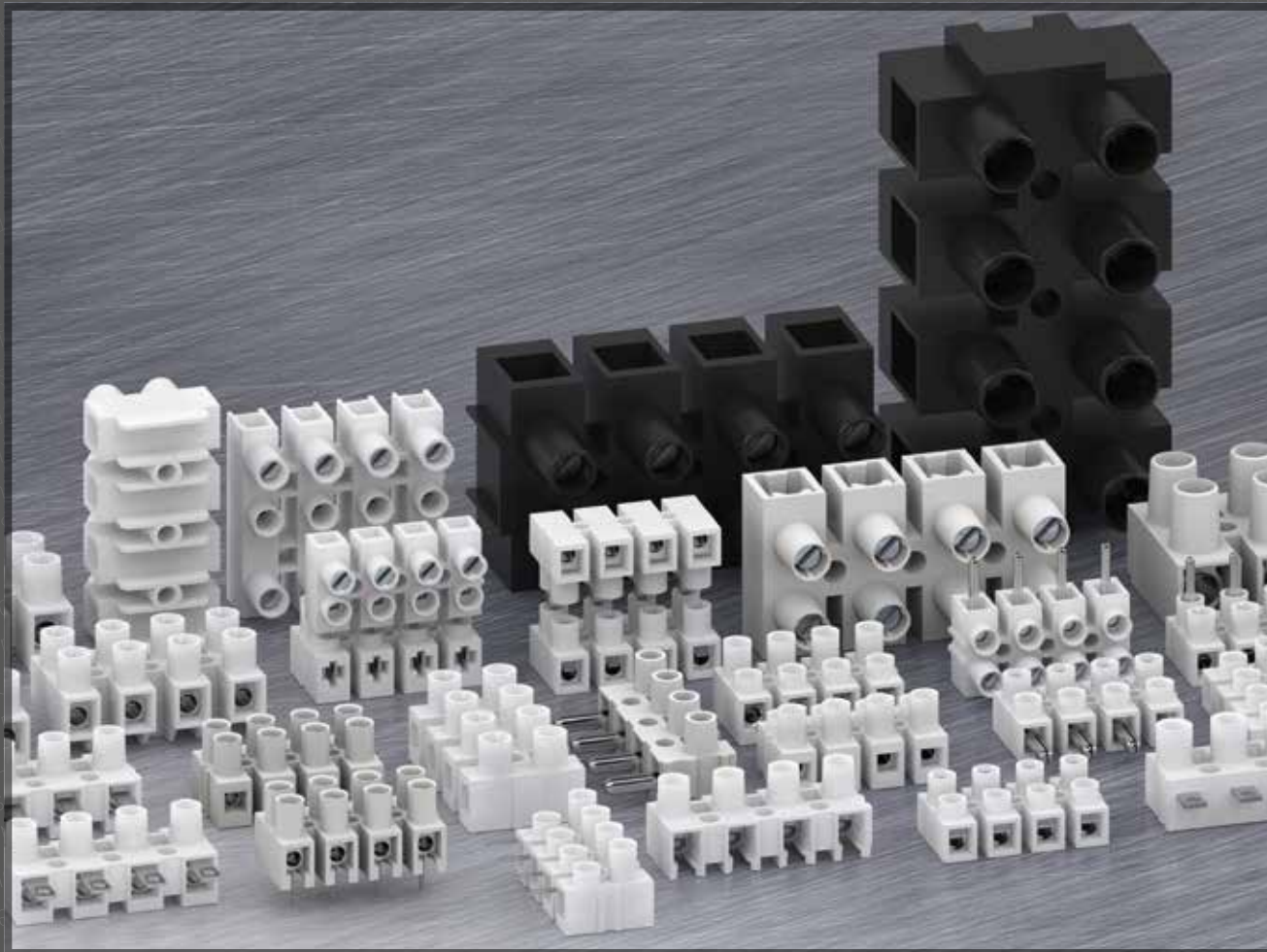


# SERIES 300

---



# 300 Series: available in multiple sizes for every application ...

	Pitch	Current Rating	Voltage Rating	Wire Range
<b>302</b> 	8 mm	17 A	320 V <sup>1)</sup>	1,5 mm <sup>2</sup> 12 AWG
<p>The 302 series version is our smallest screw terminal blocks. Like each of our 300 series family, it is available in 1- to 12-pole, and its housing is molded from a flexible polyamide, allowing the connector to be mounted on curved surfaces. Various designs from plug-in to wire-to-wire are also available.</p>				
<b>323</b> 	10 mm	24 A	630 V <sup>1)</sup>	2,5 mm <sup>2</sup> 10 AWG
<p>The 323 series is our most popular size, rated at 24 Amps, it meets a wide variety of applications. It can be used as a connector coupling or the classic screw connection: the different versions offer a wide range of possible applications.</p>				
<b>324</b> 	11,5 mm	32 A	630 V <sup>1)</sup>	4 mm <sup>2</sup> 10 AWG
<p>Ideally suited for large power applications, the 324 series is rated to 32 amps and offers a large conductor cross-section (16-10 AWG / 1 - 10 mm<sup>2</sup> / 1 - 6 mm<sup>2</sup>). In addition to the standard screw version, a plug-in connector version is available, allowing for pre-assembled terminal strips to be easily plugged together.</p>				
<b>326</b> 	14,5 mm	56 A	630 V <sup>1)</sup>	10 mm <sup>2</sup> 8 AWG
<p>With the 326 series, we enter the field of high-current applications, with a current range of 57 amps. The large pitch ensures outstanding isolation between contacts. All special features of the previous series are also made available.</p>				
<b>327</b> 	14,5 mm	76 A	630 V <sup>1)</sup>	16 mm <sup>2</sup> 4 AWG
<p>Like the previous series, the 327 series is designed in the same way with even a higher current rating: 76 amps. Due to the special design and the selected materials, the current and voltage values are increased and ideal for high-performance applications.</p>				
<b>328</b> 	17,5 mm	101 A	750 V	25 mm <sup>2</sup> 4 AWG
<p>Extending our product range is our 328 Series, with a large pitch spacing of sets new standards. With outstanding current and voltage values, it offers perfect properties in high-current applications.</p>				
<b>329</b> 	22 mm	125 A	750 V	35 mm <sup>2</sup> 2 AWG
<p>The largest of our 300 family versions is our 329 series. Rated to 125 amps, it is one of the few terminal blocks on the market, that can handle such currents without any problems and is the top product as a robust terminal block even in critical areas.</p>				

## ... with unique features



### Stainless steel wire protector

Each wire protector version of this product family is manufactured from a **high-quality stainless-steel**. This prevents damage to the cable when tightening the screw and ensures the use with stranded conductors.



### Terminal bodies

The terminal bodies, made of **highest quality brass material** and tin plated to guarantee proper contact and excellent current transmission. Using lead-free tin versions, WECO is already implementing the new REACH guidelines in this series.



### Polyamide housing

**High-quality and precisely** molded housings made of polyamide V2 or V0 material guarantee optimum insulation. The materials are particularly UV-, corrosion- and age-resistant as well as resistant to most other environmental influences.



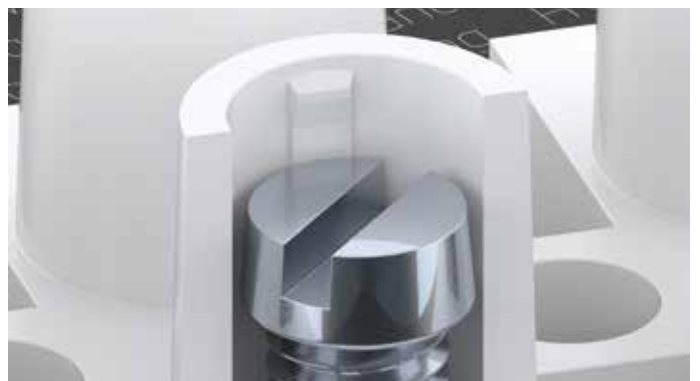
### Screws

The standard carbon steel screw **can withstand high torques** without damage. For different applications we offer screws made of different materials (also anti-magnetic) and with different screw heads.



### Wire Stop System

Integrated into the terminal body, the wire stop prevents one wire from being inserted too deep and **preventing** the opposing wire to be **property inserted**. This saves time as disconnection and reconnection of conductors is thus a thing of the past.



### Captive screws

Special housing geometries provide captive screws or **protection against self-release**. This is especially important when used in overhead applications, control panels or in a high vibration areas to ensure screws remains in their slot.





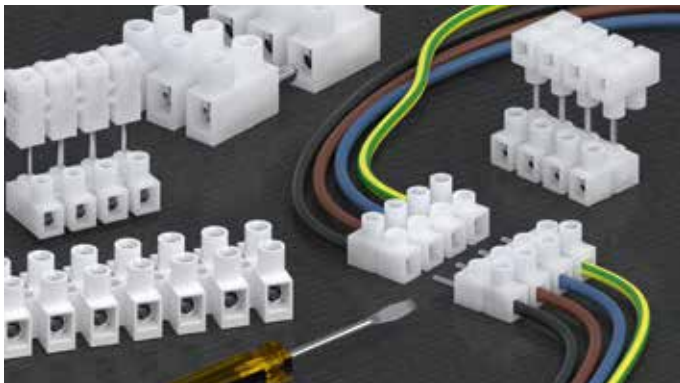
## Wide Current Ratings

The complete 300 Series product family with its different dimensions, pitch, and wide range of **current ratings from 17 to 125 amps** offers the right product for every application. A high power offer from WECO!



## Designs for printed circuit boards

Special designs with solder pins, expanding our offer with **applications on printed circuit boards**. Due to our unique welding technology and in-house production, special solder pin lengths can be realized without any problems. Just give us a call.



## Wire or Plug-in Connection

The connection options of the 300 Series ranges from simple **screw connections to plug-in connector systems** which is designed for quick plug-in assemblies of several peripheral devices, these terminal strips are perfect. Try it out!



## Labeling

We offer **various types of labeling** for clear identification of the connections. Available as a direct print on the housing or on a separate marking strip for mounting on or under the terminal strip. This allows a fool-proof connections!



## Colours

The 300 series product family is available in standard natural or white (V0 material). We are happy to offer **various other colours** for special applications on request. WECO brings colour into play!



## Grounding poles

All versions of our connectors can be equipped with a grounding pole on request. The **longer connector pin** makes contact first when plugged and establishes a safe grounding. The position of the grounding pole can be freely determined.

# THE MARATHON-SERIES

In 1953, WECO presented the first iteration of this series at the Hanover Fair. It was a complete success and even today we are proud of the continuing success of this then forward-looking innovation.

What started with just one product back in 1953, developed over time into a large family. Our 300 Wire-to-Wire series established itself in the market and continues to steadily expand into new applications worldwide.

Our customers, it is considered one of the most popular series for electrical connection in equipment.

Over the course of time, our product range has expanded to meet a variety of applications with a wide range of current ratings.

Our product range includes our full range of screw terminal bodies as well as custom variations with a plug-in connectors system.

Regardless of your application, WECO 300 Series is designed to meet your needs, and if you require a custom variation:  
**WECO can tailor a solution for you.**

## CONNECTING INDUSTRIES FOR OVER 100 YEARS!

We are an engineering based company specialized in developing, manufacturing and optimizing electrical connection solutions for the energy, industrial, electrical, and electronic markets.

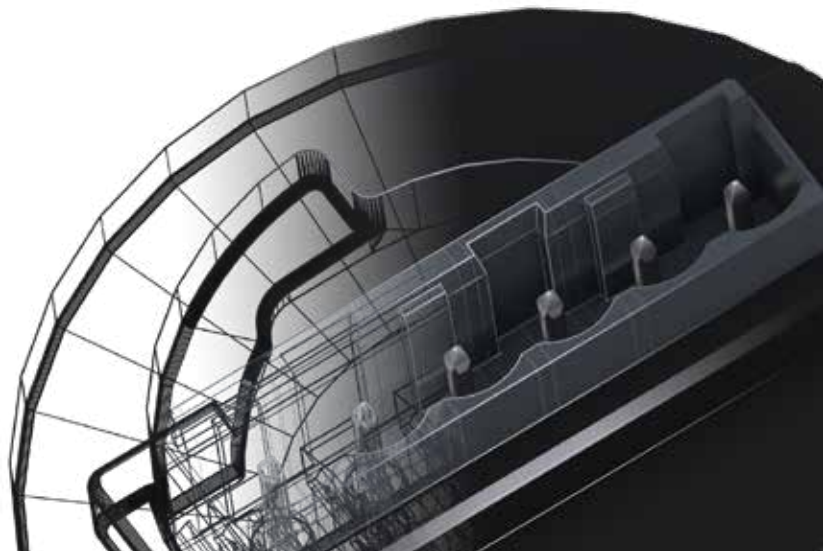
Founded 1921 in Germany, we are a global company headquartered in Montreal, Canada, with sales and manufacturing sites in seven key locations around the world.

We provide excellent value to our customers by developing, enhancing, and tailoring our connectors to their needs.

We strive to get it right the first time, every time, through continuous process improvement and fostering business relationships with customers.

Our streamlined manufacturing production delivers components that offer superior reliability, reduced footprint, and compact designs.

These advantages have resulted in reduced lead times and greater efficiency, creating greater return on investment for the end user.



# We are global ...

## CANADA & NORTH AMERICA

GLOBAL HEADQUARTER  
WECO Electrical Connectors Inc.  
18 050 Trans-Canada Highway  
Kirkland, QC Canada H9J 4A1  
Phone: +1 514 694-9136  
Fax: +1 514 694-0956  
salesnorthamerica@wecoconnectors.com  
www.wecoconnectors.com

## EMEIA

WECO Contact GmbH  
Donaustrasse 15  
63452 Hanau, Germany  
Phone: +49 6181 105 -145  
Fax: +49 6181 105 -720  
salesemeia@wecoconnectors.com  
www.wecoconnectors.com

## BRAZIL

WECO do Brasil LTDA.  
Rua Edvino Antônio Deboni 225  
Galpão 38  
CEP 81.330-600  
Curitiba, Brasil  
Phone: +55 41 3278-9720  
salesbrazil@wecoconnectors.com  
www.wecoconnectors.com

## LATIN AMERICA

WECO de México SA CV  
Av. Vicente Guerrero #76  
Col. Agua Blanca Industrial  
Zapopan, Jalisco, C.P. 45235, México  
Phone: +52 33 3684 9066  
Phone: +52 33 3804 0094  
Fax: +52 33 3684 9066  
saleslatam@wecoconnectors.com  
www.wecoconnectors.com

## ASIA PACIFIC

WECO Electrical (Shenzhen) Ltd.  
Room 909A, North Block,  
Cangsong Building, Tairan 6th Road,  
Chengongmiao, Futian district,  
Shenzhen 518040, China  
Phone: +86 755 8280 7672 -0  
Fax: +86 755 8280 7674  
salesasia@wecoconnectors.com  
www.wecoconnectors.com

## ASIA PACIFIC

WECO Electrical Connectors Ltd.  
Room 1105, New Commerce Centre  
19 On Sum Street, Shatin  
New Territory, Hong Kong, China  
Phone: +852 2636 6252  
Fax: +852 2559 3161  
salesasia@wecoconnectors.com  
www.wecoconnectors.com

# Your local contact

**wecoconnectors.com**

© 2022 by WECO.

WECO® is a registered trademark of WECO Electrical Connectors Inc.  
Information provided in this document may be changed without prior notice.

Trifold "Series 300" | 17 955 103 | EN | R110.2022

# WECO