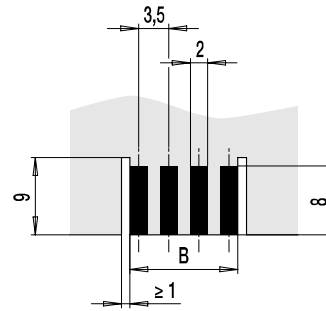
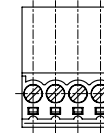
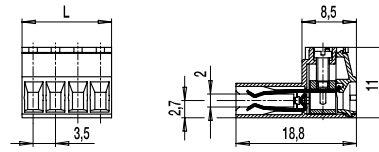
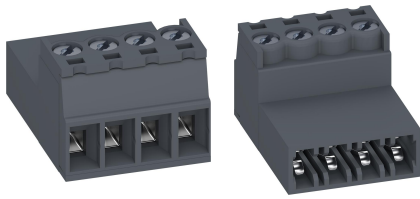


110-AP-211

Plug connector
Screw connection, direct contact to PCB



GENERAL INFORMATION

Pitch	3,5 mm
No. of poles	2 - 12
Areas of application	Telecommunication technology, house telephones, intercoms

TECHNICAL DATA

Clamping Range	solid / stranded / AWG 0,14 - 1,5 mm ² / 0,14 - 1,5 mm ² / 30 - 16 AWG		
Rated Cross Section	1 mm ²		
Wire Stripping Length	6,5 mm ± 0,5 mm		
Overvoltage Category	III	III	II
Pollution Severity Level	3	2	2
Rated Voltage	160 V	160 V	320 V
Rated Impulse Voltage	2,5 kV	2,5 kV	2,5 kV
Rated Insulation Voltage	130 V acc. to EN 60998-1		
Rated Current	3 A for one side PCB contact 6 A for two side PCB contact		
PCB thickness	1,4 - 1,8 mm		
Torque	0,2 Nm		

APPROVALS

	Current [A]	Voltage [V]	Group	AWG	[Nm]
	7	150	B	30 - 16	0,23

MATERIAL

Moulding	PA, grey, V-0
Comparative Tracking Index	CTI ≥ 600
Insulating Group	I
Temperature Range	-40°C up to 100°C
Contact elements	Copper alloy, tin plated
Screw	M2: copper alloy, tin plated

OPTIONS / ACCESSORIES

- Consecutive numbering
- Special marking according to drawing
- Self-adhesive marking strip BST-3,50
- Coding keys 110-AP, Part-No.: 10.496.028
- Factory-assembled coding keys on request

CONFIGURATIONS

Poles	Item	Article number	Length (L)	Packaging	PU
2	110-AP-211/02	10.842.072	7,00 mm	Box	200
3	110-AP-211/03	10.842.073	10,50 mm	Box	200
4	110-AP-211/04	10.842.074	14,00 mm	Box	100
5	110-AP-211/05	10.842.075	17,50 mm	Box	100
6	110-AP-211/06	10.842.076	21,00 mm	Box	100
7	110-AP-211/07	10.842.077	24,50 mm	Box	50
8	110-AP-211/08	10.842.078	28,00 mm	Box	50
9	110-AP-211/09	10.842.079	31,50 mm	Box	50
10	110-AP-211/10	10.842.080	35,00 mm	Box	50
11	110-AP-211/11	10.842.081	38,50 mm	Box	50
12	110-AP-211/12	10.842.082	42,00 mm	Box	50

further number of poles on request

