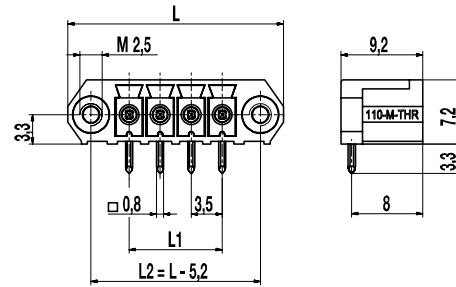
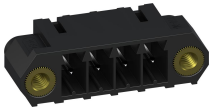
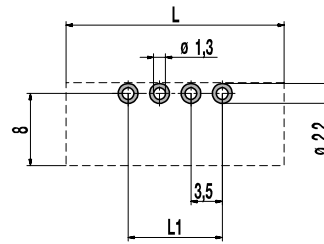


# 110-M-215-THR

Pin strip for THR  
 Plug-in direction parallel to PCB, with connecting flanges



### PCB LAYOUT



L1 = (No. of poles - 1) x pitch  
 Solder paste thickness:  
 0,15 - 0,2 mm

### GENERAL INFORMATION

Pitch	3,5 mm
No. of poles	2 - 12
Usable with	all plug connectors of series 110 with connecting flanges

### TECHNICAL DATA

Overvoltage Category	III	III	II
Pollution Severity Level	3	2	2
Rated Voltage	160 V	160 V	320 V
Rated Impulse Voltage	2,5 kV	2,5 kV	2,5 kV
Rated Insulation Voltage	130 V acc. to EN 60998-1		
Rated Current	8 A		
Soldering process	Wave solder & reflow solder		
Hole in PCB	ø 1,3 mm		
PCB thickness	Wave solder max. 1,6 mm; reflow solder 1,6 mm - 3,2 mm		

### APPROVALS

	Current [A]	Voltage [V]	Group	AWG	[Nm]
	8	300	B, D		
	8	300	B		

### MATERIAL

Moulding	PA HT, black, V-0
Comparative Tracking Index	CTI ≥ 600
Insulating Group	I
Temperature Range	-40°C up to 120°C; reflow solder temperature peak max. 255°C acc. to DIN EN 61760-1
Solder pin	0,8 x 0,8 mm; tin plated brass

### OPTIONS / ACCESSORIES

- Consecutive numbering
- Special marking according to drawing
- Self-adhesive marking strip BST-3,50 [1]
- Coding elements 120-K-HT-WS

[1] To be fitted after reflow soldering process

### CONFIGURATIONS

Poles	Item	Article number	Length (L)	Packaging	PU	Tape Width	Tape Height
2	110-M-215-THR/02	10.841.352	17,30 mm	Box	100		
3	110-M-215-THR/03	10.841.353	20,80 mm	Box	100		
4	110-M-215-THR/04	10.841.354	24,30 mm	Box	100		
5	110-M-215-THR/05	10.841.355	27,80 mm	Box	50		
6	110-M-215-THR/06	10.841.356	31,30 mm	Box	50		
8	110-M-215-THR/08	10.841.358	38,30 mm	Box	50		
10	110-M-215-THR/10	10.841.360	45,30 mm	Box	50		
12	110-M-215-THR/12	10.841.362	52,30 mm	Box	50		
2	110-M-215-THR/02-T&R	10.841.352.A00	17,30 mm	Tape-on-Reel	500	32 mm	11,8 mm
3	110-M-215-THR/03-T&R	10.841.353.A00	20,80 mm	Tape-on-Reel	500	32 mm	11,8 mm

further number of poles on request

