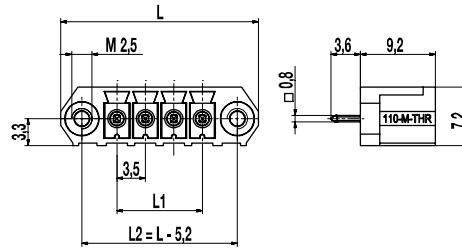
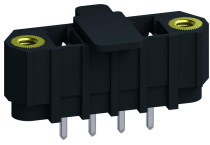
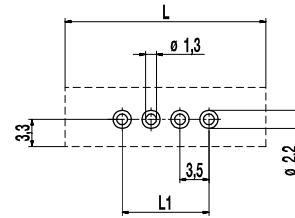


110-M-225-THR

Pin strip for THR
 Plug-in direction vertical to PCB, with connecting flanges



PCB LAYOUT



L1 = (No. of Poles - 1) x pitch
 Solder paste thickness:
 0,15 - 0,2 mm

GENERAL INFORMATION

Pitch	3,5 mm
No. of poles	2 - 12
Usable with	all plug connectors of series 110 with connecting flanges

TECHNICAL DATA

Overvoltage Category	III	III	II
Pollution Severity Level	3	2	2
Rated Voltage	160 V	160 V	320 V
Rated Impulse Voltage	2,5 kV	2,5 kV	2,5 kV
Rated Insulation Voltage	130 V acc. to EN 60998-1		
Rated Current	8 A		
Soldering process	Wave solder & reflow solder		
Hole in PCB	ø 1,3 mm		
PCB thickness	Wave solder max. 1,6 mm; reflow solder 1,6 mm - 3,2 mm		

APPROVALS

	Current [A]	Voltage [V]	Group	AWG	[Nm]
	8	300	B, D		
	8	300	B		

MATERIAL

Moulding	PA HT, black, V-0
Comparative Tracking Index	CTI ≥ 600
Insulating Group	I
Temperature Range	-40°C up to 120°C; reflow solder temperature peak max. 255°C acc. to DIN EN 61760-1
Solder pin	0,8 x 0,8 mm; tin plated brass

OPTIONS / ACCESSORIES

- Consecutive numbering
- Special marking according to drawing
- Self-adhesive marking strip BST-3,50 [1]
- Coding elements 120-K-HT-WS

[1] To be fitted after reflow soldering process

CONFIGURATIONS

Poles	Part number	Article number	Length (L)	Packaging	PU	Tape Width	Tape Height
2	110-M-225-THR/02	20.841.352	17,30 mm	Box	100		
3	110-M-225-THR/03	20.841.353	20,80 mm	Box	100		
4	110-M-225-THR/04	20.841.354	24,30 mm	Box	100		
5	110-M-225-THR/05	20.841.355	27,80 mm	Box	50		
6	110-M-225-THR/06	20.841.356	31,30 mm	Box	50		
3	110-M-225-THR/03-T&R	20.841.353.A00	20,80 mm	Tape-on-Reel	300	56 mm	14,9 mm
4	110-M-225-THR/04-T&R	20.841.354.A00	24,30 mm	Tape-on-Reel	300	56 mm	14,9 mm
5	110-M-225-THR/05-T&R	20.841.355.A00	27,80 mm	Tape-on-Reel	300	56 mm	14,9 mm
6	110-M-225-THR/06-T&R	20.841.356.A00	31,30 mm	Tape-on-Reel	300	56 mm	14,9 mm

further number of poles on request

