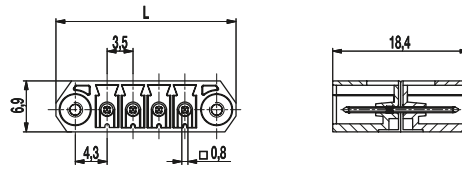
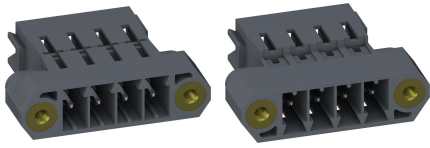


110-M-345(-R)

Coupler
Threaded insert, single-sided



GENERAL INFORMATION

Pitch	3,5 mm
No. of poles	2 - 12
Usable with	all plug connectors of series 110

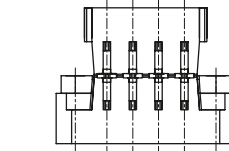
TECHNICAL DATA

Overvoltage Category	III	III	II
Pollution Severity Level	3	2	2
Rated Voltage	160 V	160 V	320 V
Rated Impulse Voltage	2,5 kV	2,5 kV	2,5 kV
Rated Insulation Voltage	130 V acc. to EN 60998-1		
Rated Current	8 A		

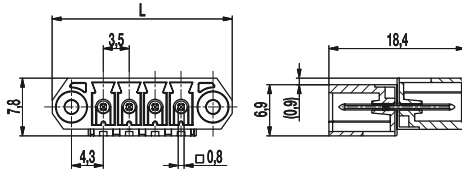
APPROVALS

	Current [A]	Voltage [V]	Group	AWG	[Nm]
	8	300	B		
	8	300	B		

CAUTION: NOT FOR CURRENT INTERRUPTING



110-M-345



110-M-345-R

MATERIAL

Moulding	PA, grey, V-0
Comparative Tracking Index	CTI ≥ 600
Insulating Group	I
Temperature Range	-40°C up to 100°C
Pin	0,8 x 0,8 mm; tin plated brass

OPTIONS / ACCESSORIES

- Marking according to customer requirement
- Self-adhesive marking strip BST-3,50

CONFIGURATIONS

Poles	Item	Article number	Item	Article number	Length (L)	Packaging	PU
2	110-M-345/02	10.841.902	110-M-345-R/02	40.841.902	17,30 mm	Box	100
3	110-M-345/03	10.841.903	110-M-345-R/03	40.841.903	20,80 mm	Box	
4	110-M-345/04	10.841.904	110-M-345-R/04	40.841.904	24,30 mm	Box	50
8	110-M-345/08	10.841.908	110-M-345-R/08	40.841.908	38,30 mm	Box	
10	110-M-345/10	10.841.910	110-M-345-R/10	40.841.910	45,30 mm	Box	

further number of poles on request

