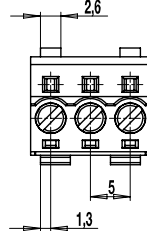
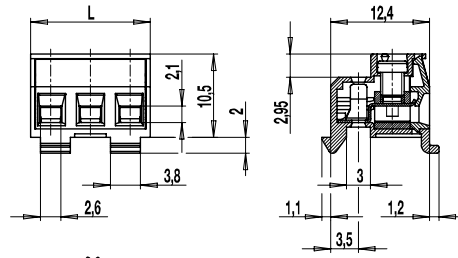


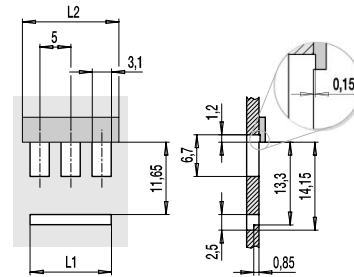
115-F-211/..-1,1-SW

Plug connector

Screw connection, with snap-on feet, for pins with \varnothing 1,1 mm



L1 = (Number of Poles x Pitch) - 1,9
L2 = (Number of Poles x Pitch) + 0,5



GENERAL INFORMATION

Pitch	5 mm
No. of poles	2 - 12
Usable with	all \varnothing 1,1 mm pin strips series 971-SL..
Areas of application	Building and telecommunication technology, particularly for mass-production applications where space is limited.

TECHNICAL DATA

Clamping Range	solid / stranded / AWG		
	0,14 - 2,5 mm ² / 0,14 - 1,5 mm ² / 26 - 14 AWG		
Rated Cross Section	1,5 mm ²		
Wire Stripping Length	6 mm \pm 0,5 mm		
Overvoltage Category	III	III	II
Pollution Severity Level	3	2	2
Rated Voltage	250 V	320 V	630 V
Rated Impulse Voltage	4 kV	4 kV	4 kV
Rated Insulation Voltage	250 V acc. to EN 60998-1		
Rated Current	10 A		
Torque	0,5 Nm		

APPROVALS

	Current [A]	Voltage [V]	Group	AWG	[Nm]
	12	300	B	26 - 14	0,23
	10	300	D	26 - 14	0,23
	12	300	B	26 - 14	0,22
	10	300	D, E	26 - 14	0,22

MATERIAL

Moulding	PA, black, V-0
Comparative Tracking Index	CTI \geq 600
Insulating Group	I
Temperature Range	-40°C up to 100°C
Terminal body	Nickel plated brass
Pressure clamp	Copper alloy, tin plated
Screw	M3; zinc plated steel, blue passivated
Spring	Copper alloy, tin plated

OPTIONS / ACCESSORIES

- Marking according to customer requirement
- Self-adhesive marking strip BST-5,00

CONFIGURATIONS

Poles	Item	Article number	Length (L)	Packaging	PU
2	115-F-211/02-1,1-SW	10.816.226	10,00 mm	Box	250
3	115-F-211/03-1,1-SW	10.816.227	15,00 mm	Box	250
4	115-F-211/04-1,1-SW	10.816.228	20,00 mm	Box	250
5	115-F-211/05-1,1-SW	10.816.229	25,00 mm	Box	100
6	115-F-211/06-1,1-SW	10.816.230	30,00 mm	Box	100
8	115-F-211/08-1,1-SW	10.816.232	40,00 mm	Box	100
10	115-F-211/10-1,1-SW	10.816.234	50,00 mm	Box	50
12	115-F-211/12-1,1-SW	10.816.236	60,00 mm	Box	50

further number of poles on request

