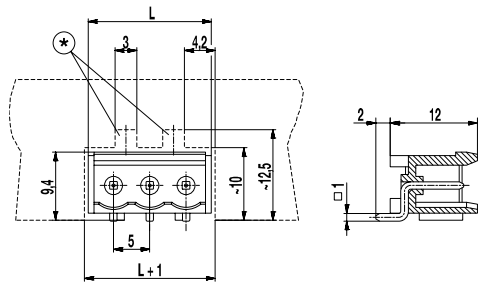
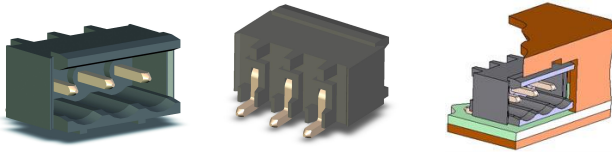


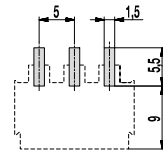
120-M-211-SMD

Pin strip for SMD
Plug-in direction parallel to PCB, with side walls



(*) Please plan for two gaps in the measures of 3 x 2.5 mm in the cut-out of the control panel for the snap-in device of the counterpart

PCB LAYOUT



Solder paste thickness: 0,2 mm

GENERAL INFORMATION

Pitch	5 mm
No. of poles	2 - 12
Usable with	all plug connectors of series 120

TECHNICAL DATA

Overvoltage Category	III	III	II
Pollution Severity Level	3	2	2
Rated Voltage	250 V	320 V	630 V
Rated Impulse Voltage	4 kV	4 kV	4 kV
Rated Insulation Voltage	250 V acc. to EN 60998-1		
Rated Current	12 A		
Soldering process	Reflow solder		

APPROVALS

	Current [A]	Voltage [V]	Group	AWG	[Nm]
	15	300	B		
	10	300	D, E		
	15	300	B		
	10	300	D, E		

MATERIAL

Moulding	PA HT, black, V-0
Comparative Tracking Index	CTI ≥ 600
Insulating Group	I
Temperature Range	-40°C up to 120°C; reflow solder temperature peak max. 255°C acc. to DIN EN 61760-1
Solder pin	1,0 x 1,0 mm; tin plated brass

OPTIONS / ACCESSORIES

- Consecutive numbering
- Special marking according to drawing
- Self-adhesive marking strip BST-5,00 [1]
- Tape-on-Reel on request

[1] To be fitted after reflow soldering process

CONFIGURATIONS

Poles	Part number	Article number	Length (L)	Packaging	PU	Tape Width	Tape Height
2	120-M-211-SMD/02	30.806.352	12,00 mm	Box	774		
3	120-M-211-SMD/03	30.806.353	17,00 mm	Box	540		
4	120-M-211-SMD/04	30.806.354	22,00 mm	Box	414		
5	120-M-211-SMD/05	30.806.355	27,00 mm	Box	342		
6	120-M-211-SMD/06	30.806.356	32,00 mm	Box	288		
2	120-M-211-SMD/02-T&R	30.806.352.A00	12,00 mm	Tape-on-Reel	375	24 mm	10,4 mm
3	120-M-211-SMD/03-T&R	30.806.353.A00	17,00 mm	Tape-on-Reel	375	44 mm	10,4 mm
4	120-M-211-SMD/04-T&R	30.806.354.A00	22,00 mm	Tape-on-Reel	375	44 mm	10,4 mm
5	120-M-211-SMD/05-T&R	30.806.355.A00	27,00 mm	Tape-on-Reel	375	44 mm	10,4 mm

further number of poles on request

