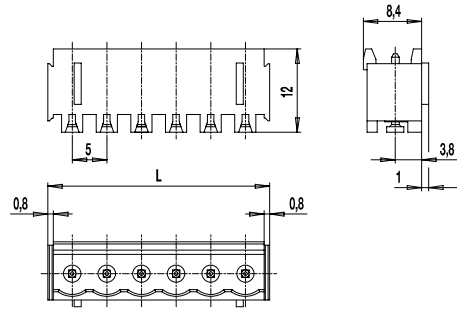
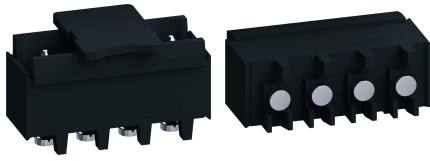
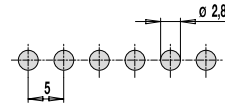


# 120-M-221-SMD

Pin strip for SMD  
 Plug-in direction vertical to PCB, with side walls



### PCB LAYOUT



Solder paste thickness:  
 0,15 - 0,2 mm  
 Solder pad diameter:  $\varnothing$  2,8 mm

### GENERAL INFORMATION

Pitch	5 mm
No. of poles	2 - 12
Usable with	all plug connectors of series 120

### TECHNICAL DATA

Overvoltage Category	III	III	II
Pollution Severity Level	3	2	2
Rated Voltage	160 V	160 V	250 V
Rated Impulse Voltage	2,5 kV	2,5 kV	2,5 kV
Rated Insulation Voltage	130 V acc. to EN 60998-1		
Rated Current	12 A		
Soldering process	Reflow solder		

### APPROVALS

	Current [A]	Voltage [V]	Group	AWG	[Nm]
	15	300	B		
	10	300	D		
	15	300	B		
	10	300	D, E		

### MATERIAL

Moulding	PA HT, black, V-0
Comparative Tracking Index	CTI $\geq$ 600
Insulating Group	I
Temperature Range	-40°C up to 120°C; reflow solder temperature peak max. 255°C acc. to DIN EN 61760-1
Solder pin	$\varnothing$ 1,1 mm (plug-in area); tin plated brass

### OPTIONS / ACCESSORIES

- Consecutive numbering
- Special marking according to drawing
- Self-adhesive marking strip BST-5,00 [1]

[1] To be fitted after reflow soldering process

### CONFIGURATIONS

Poles	Part number	Article number	Length (L)	Packaging	PU	Tape Width	Tape Height
2	120-M-221-SMD/02	40.806.352	12,00 mm	Box	200		
3	120-M-221-SMD/03	40.806.353	17,00 mm	Box	200		
4	120-M-221-SMD/04	40.806.354	22,00 mm	Box	100		
5	120-M-221-SMD/05	40.806.355	27,00 mm	Box	100		
6	120-M-221-SMD/06	40.806.356	32,00 mm	Box	100		
2	120-M-221-SMD/02-T&R	40.806.352.A00	12,00 mm	Tape-on-Reel	225	32 mm	17,4 mm
3	120-M-221-SMD/03-T&R	40.806.353.A00	17,00 mm	Tape-on-Reel	225	32 mm	17,4 mm
4	120-M-221-SMD/04-T&R	40.806.354.A00	22,00 mm	Tape-on-Reel	225	56 mm	17,4 mm
5	120-M-221-SMD/05-T&R	40.806.355.A00	27,00 mm	Tape-on-Reel	225	56 mm	17,4 mm
6	120-M-221-SMD/06-T&R	40.806.356.A00	32,00 mm	Tape-on-Reel	225	56 mm	17,4 mm

further number of poles on request

