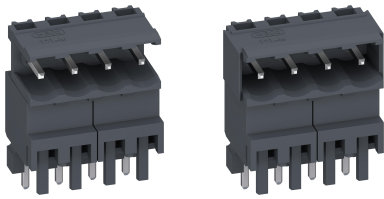


# 121-M-181/-281

Header  
Plug-in direction parallel to PCB, tall version



## GENERAL INFORMATION

Pitch	5,08 mm
No. of poles	2 - 12
Usable with	all plug connectors of series 121
Additional Information	Ordering information: ...M-181: without side walls, not pottable ...M-281: with side walls, pottable

## TECHNICAL DATA

Overvoltage Category	III	III	II
Pollution Severity Level	3	2	2
Rated Voltage	250 V	320 V	630 V
Rated Impulse Voltage	4 kV	4 kV	4 kV
Rated Insulation Voltage	250 V acc. to EN 60998-1		
Rated Current	12 A		
Hole in PCB	ø 1,4 mm		

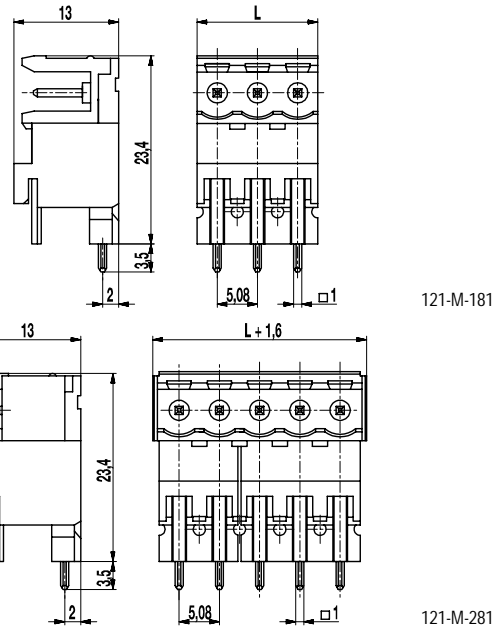
## APPROVALS

	Current [A]	Voltage [V]	Group	AWG	[Nm]
	15	300	B		
	10	300	D		
	15	300	B		
	10	300	D, E		

## CONFIGURATIONS

Poles	Item	Article number	Item	Article number	Length (L)	Packaging	PU
2	121-M-181/02	25.806.152	121-M-281/02	25.806.176	10,16 mm	Box	200
3	121-M-181/03	25.806.153	121-M-281/03	25.806.177	15,24 mm	Box	100
4	121-M-181/04	25.806.154	121-M-281/04	25.806.178	20,32 mm	Box	100
5	121-M-181/05	25.806.155	121-M-281/05	25.806.179	25,40 mm	Box	100
6	121-M-181/06	25.806.156	121-M-281/06	25.806.180	30,48 mm	Box	100
7	121-M-181/07	25.806.157	121-M-281/07	25.806.181	35,56 mm	Box	50
8	121-M-181/08	25.806.158	121-M-281/08	25.806.182	40,64 mm	Box	50
9	121-M-181/09	25.806.159	121-M-281/09	25.806.183	45,72 mm	Box	50
10	121-M-181/10	25.806.160	121-M-281/10	25.806.184	50,80 mm	Box	50
11	121-M-181/11	25.806.161	121-M-281/11	25.806.185	55,88 mm	Box	50
12	121-M-181/12	25.806.162	121-M-281/12	25.806.186	60,96 mm	Box	50

further number of poles on request



## MATERIAL

Moulding	PA, grey, V-0
Comparative Tracking Index	CTI ≥ 600
Insulating Group	I
Temperature Range	-40°C up to 100°C
Solder pin	1,0 x 1,0 mm; tin plated brass

## OPTIONS / ACCESSORIES

- Marking according to customer requirement
- Self-adhesive marking strip BST-5,08
- Pitch of 10,16 mm for larger clearance and creepage distances
- Coding elements 120-K
- Connectors equipped with coding elements on request

