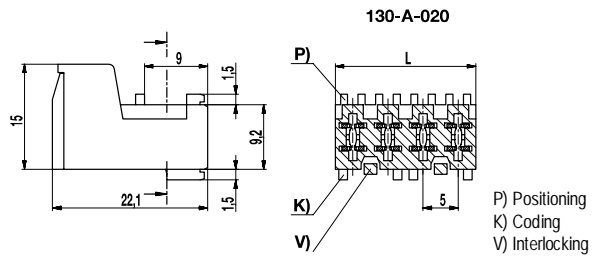
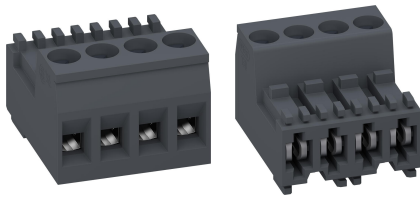


# 130-A

Plug connector  
Screw connection



## GENERAL INFORMATION

Pitch	5 mm
No. of poles	2 - 12
Usable with	Tab connectors 130-K, 900-SUN-5

## TECHNICAL DATA

Clamping Range	<i>solid / stranded / AWG</i>		
	0,2 - 4 mm <sup>2</sup> / 0,2 - 2,5 mm <sup>2</sup> / 26 - 14 AWG		
Rated Cross Section	2,5 mm <sup>2</sup>		
Wire Stripping Length	7 mm ± 0,5 mm		
Overvoltage Category	III	III	II
Pollution Severity Level	3	2	2
Rated Voltage	250 V	320 V	630 V
Rated Impulse Voltage	4 kV	4 kV	4 kV
Rated Insulation Voltage	12 A		
Torque	0,5 Nm		

## APPROVALS

	Current [A]	Voltage [V]	Group	AWG	[Nm]
	22	300	B	26 - 10	0,51
	10	300	D	26 - 10	0,51
	22	300	B	26 - 10	0,51
	10	300	D, E	26 - 10	0,51

## MATERIAL

Moulding	PA, grey, V-0
Comparative Tracking Index	CTI ≥ 600
Insulating Group	I
Temperature Range	-40°C up to 100°C
Terminal body	Nickel plated brass
Pressure clamp	Tin plated tin bronze
Screw	M3, zinc plated steel, blue passivated
Spring	Tin plated tin bronze

## OPTIONS / ACCESSORIES

- Consecutive numbering
- Special marking according to drawing
- Self-adhesive marking strip BST-5,00
- Pitch of 10 mm for larger clearance and creepage distances
- Version with extended wire entrance

## CONFIGURATIONS

Poles	Item	Article number	Length (L)	Packaging	PU
2	130-A/02	21.802.120	10,00 mm	Box	100
3	130-A/03	21.802.130	15,00 mm	Box	100
4	130-A/04	21.802.140	20,00 mm	Box	100
5	130-A/05	21.802.151	25,00 mm	Box	50
6	130-A/06	21.802.161	30,00 mm	Box	50
7	130-A/07	21.802.171	35,00 mm	Box	50
8	130-A/08	23.802.181	40,00 mm	Box	50
9	130-A/09	21.802.191	45,00 mm	Box	50
10	130-A/10	21.802.100	50,00 mm	Box	50
11	130-A/11	21.802.111	55,00 mm	Box	50
12	130-A/12	21.802.122	60,00 mm	Box	50

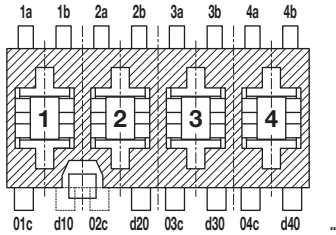
further number of poles on request



# 130-A

Plug connector

ADDITION: Overview of standard coding versions



Individual positioning, coding or interlocking possible. Please contact us.

	Type / Part number	Positioning (P)	Coding (K)	Interlocking (V)
	130-A-021/02 21.802.120	1b, 2a	01c, d20	1/2
	130-A-021/03 21.802.130	1b	01c, d20	1/2
	130-A-021/04 21.802.140	1b	03c, d40	1/2, 3/4
	130-A-121/05 21.802.151	1a, 5b	01c, d30	1/2, 2/3
	130-A-121/06 21.802.161	1b	03c, d60	1/2, 4/5
	130-A-121/07 21.802.171	none	03c, d40, 07c	1/2, 5/6
	130-A-123/08 23.802.181	8b	02c, d30, 07c	2/3, 7/8
	130-A-121/09 21.802.191	1b	03c	5/6
	130-A-021/10 21.802.100	1b	03c	5/6
	130-A-121/11 21.802.111	1b, 11b	03c	5/6
	130-A-121/12 21.802.122	1b, 7a, 8b, 12b	d10, 06c, 09c, d100, d120	2/3, 11/12