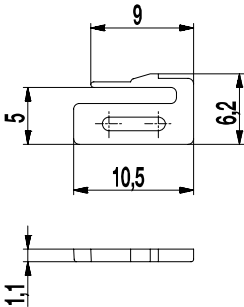


130-CP
Coding element



■ GENERAL INFORMATION

Usable with plug connector 130-P

■ MATERIAL

| | |
|----------------------------|-------------------|
| Moulding | PA, grey, V-0 |
| Comparative Tracking Index | CTI ≥ 600 |
| Insulating Group | I |
| Temperature Range | -40°C up to 100°C |

■ CONFIGURATIONS

| Part number | Article number | Packaging | PU |
|-------------|----------------|-----------|-----|
| 130-CP | 10.496.030 | Box | 100 |

