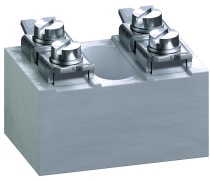


2-DIN-46281

Flat screw terminal

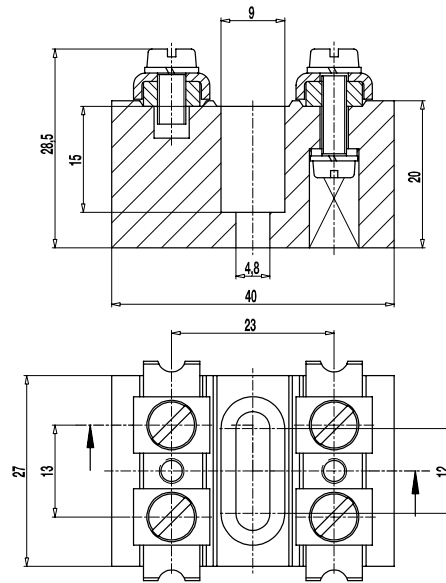


GENERAL INFORMATION

No. of poles 2

TECHNICAL DATA

Clamping Range	<i>solid / stranded / AWG</i> 0,2 - 4 mm ² / 0,25 - 2,5 mm ² / 24 - 12 AWG [1][2]
Rated Cross Section	2,5 mm ²
Wire Stripping Length	9 mm ± 0,5 mm
Rated Insulation Voltage	750 V acc. to EN 60998-1
Rated Current	24 A
Torque	1,2 Nm
Base mounting	Recommendation: max. torque 1.5 Nm
Other specifications	Terminal strips must not be strung together without considering the clearance and creepage distances.



MATERIAL

Base material	Technical ceramics
Comparative Tracking Index	CTI ≥ 600
Insulating Group	I
Temperature Range	-40°C up to 250°C
Spring washer	Zinc plated steel
Screw terminal	Nickel plated brass
Terminal body	Zinc plated steel
Screw	M4; Zinc plated steel

- [1] The clamping range for flexible and AWG conductors was determined using ferrules. Use of flexible conductors without ferrules is not recommended.
 [2] Per pole two wires of identical cross-section can be connected.

CONFIGURATIONS

Item	Article number	PU
2-DIN-46281	57.636.042	60