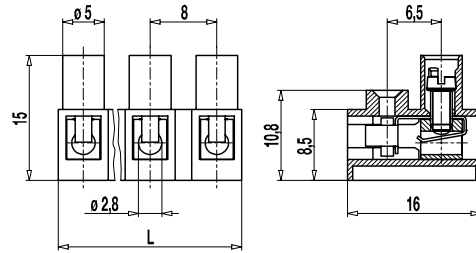
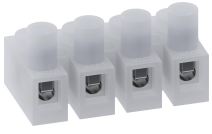


302-FLW-DS

Plug-in terminal strip

Screw connection & socket with clamping spring, Plug-in direction vertical



GENERAL INFORMATION

Pitch	8 mm
No. of poles	2 - 12
Usable with	302-SV(-DS), 302-SVG(-DS)
Areas of application	This plug connector is well suited for applications that require to easily open and close not energised circuits.

TECHNICAL DATA

Clamping Range	<i>solid / stranded / AWG</i>		
	0,34 - 2,5 mm ² / 0,34 - 1,5 mm ² / 22 - 14 AWG		
Rated Cross Section	1,5 mm ²		
Wire Stripping Length	7 mm ± 0,5 mm		
Overvoltage Category	III	III	II
Pollution Severity Level	3	2	2
Rated Voltage	160 V	160 V	320 V
Rated Impulse Voltage	2,5 kV	2,5 kV	2,5 kV
Rated Insulation Voltage	130 V acc. to EN 60998-1		
Rated Current	6 A		
Torque	0,4 Nm		
Other specifications	Rated values apply to use in combination with 302-SV(-DS) and without insulated substrates.		

APPROVALS

	Current [A]	Voltage [V]	Group	AWG	[Nm]
	10	300	B,D	22 - 14	0,4
	10	300	B,D,E	26 - 14	0,4

CONFIGURATIONS

Version	Poles	Item	Article number	Length (L)	PU
Standard	2	302-FLW-DS/02	32.820.041	15,00 mm	250
Standard	3	302-FLW-DS/03	33.820.041	23,00 mm	250
Standard	4	302-FLW-DS/04	34.820.041	31,00 mm	250
Standard	5	302-FLW-DS/05	35.820.041	39,00 mm	80
Standard	6	302-FLW-DS/06	36.820.041	47,00 mm	80
Standard	7	302-FLW-DS/07	37.820.041	55,00 mm	50
Standard	8	302-FLW-DS/08	38.820.041	63,00 mm	50
Standard	9	302-FLW-DS/09	39.820.041	71,00 mm	50
Standard	10	302-FLW-DS/10	40.820.041	79,00 mm	40
Standard	11	302-FLW-DS/11	41.820.041	87,00 mm	40
Standard	12	302-FLW-DS/12	42.820.041	94,00 mm	40

MATERIAL

Moulding	PA, natural, V-2
Comparative Tracking Index	CTI ≥ 600
Insulating Group	I
Temperature Range	-40°C up to 100°C
Terminal body	Tin plated brass
Screw	M2,6; zinc plated steel, blue passivated
Wire protector	Tin plated tin bronze
Plug	Tin plated brass

OPTIONS / ACCESSORIES

- Marking options on the screw guides
- Jumper 302-J

