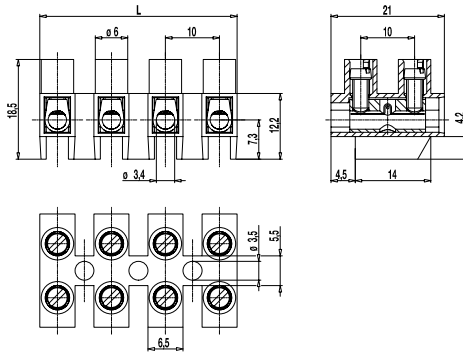
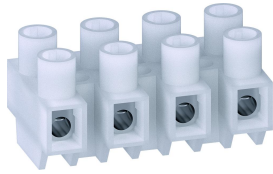


323-FU-18,5(-HDS)

Socket terminal strip

Screw connection, with 4,2 mm raised base



The socket terminal strip 323-FU-18,5 with tall foot is available in 10 mm pitch and with 1 to 12 poles.

The raised foot increases the creepage distance between terminal body and mounting surface. This terminal can be used for applications with higher voltages without an additional insulating pad.

The flexible polyamide moulding can even be mounted on curved surfaces.

The wire protector of the "HDS"-version reliably prevents damage to multi-wire flexible conductors by the turning screw.

Part Numbers

No. of poles	323-FU-18,5	323-FU-18,5-HDS	Length	PU
1	11.822.049	31.822.049	8,00	3000
2	12.822.049	32.822.049	18,00	1000
3	13.822.049	33.822.049	28,00	1000
4	14.822.049	34.822.049	38,00	500
5	15.822.049	35.822.049	48,00	500
6	16.822.049	36.822.049	58,00	80
7	17.822.049	37.822.049	68,00	65
8	18.822.049	38.822.049	78,00	50
9	19.822.049	39.822.049	88,00	50
10	20.822.049	40.822.049	98,00	40
11	21.822.049	41.822.049	108,00	40
12	22.822.049	42.822.049	117,00	40

Part Numbers: "no flame" acc. to glow-wire test

No. of poles	323-FU-18,5	323-FU-18,5-HDS	Length	PU
3	13.822.021.EN6	33.822.021.EN6	28,00	1000
12	22.822.021.EN6	42.822.021.EN6	117,00	40

further number of poles on request

General Information

Pitch	10 mm
No. of poles	1 - 12
Areas of application	For lighting applications and similar electrical equipment.




Technical Data

Clamping Range	<i>solid / flexible / AWG</i>		
<i>without wire protector</i>	0,75 - 6 mm ² / 0,75 - 4 mm ² / 18 - 10 AWG		
<i>with wire protector</i>	0,5 - 4 mm ² / 0,5 - 2,5 mm ² / 20 - 12 AWG		
Rated Cross Section	2,5 mm ²		
Wire Stripping Length	6,5 mm ± 0,5 mm		
Overvoltage Category	III	III	II
Pollution Severity Level	3	2	2
Rated Voltage	630 V	1000 V	1000 V
Rated Impulse Voltage	8 kV	8 kV	6 kV
Rated Insulation Voltage	750 V acc. to EN 60998-1		
Rated Current	24 A		
Torque	0,5 Nm		

Material

Moulding	PA, natural, V-2 (PA, white, V-0) Details in brackets apply for "no flame" products		
Comparative Tracking Index	CTI ≥ 600		
Insulating Group	I		
Temperature Range	-40°C up to 100°C		
Terminal Body	Nickel plated brass		
Screw	M3; zinc plated steel, blue passivated		
Wire protector	Stainless steel strip		

Approvals

	Current [A]	Voltage [V]	Group	AWG	[Nm]
	30	300	B	22 - 10	0,51
	10	300	D	22 - 10	0,51
	25	300	B,C,D,E	26 - 10	0,51
	5	600	D,E	26 - 10	0,51
	Current [A]	Voltage [V]	[mm ²]		
	24	750	2,5		

Options / Accessories

- Marking options on and between the screw guides
- Marking strips BST-323
- Jumper 323-J
- Screws made out of brass
- Crosshead screws
- Cover caps A-323 und base plate B-323 for additional contact protection
- Integrated wire stop (323-V-FU-18,5(-HDS))