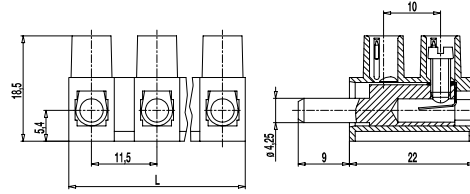
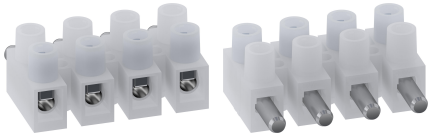


324-STFS(-DS)

Plug-in terminal strip
Screw connection & pin



GENERAL INFORMATION

Pitch	11,5 mm
No. of poles	2 - 12
Usable with	324-STFB(-DS)
Areas of application	Applications that require to easily open and close not energised circuits.

TECHNICAL DATA

Clamping Range	<i>solid / stranded / AWG</i>		
without wire protector	1 - 10 mm ² / 1 - 6 mm ² / 16 - 10 AWG		
with wire protector	0,75 - 6 mm ² / 0,75 - 4 mm ² / 18 - 12 AWG		
Rated Cross Section	4 mm ²		
Wire Stripping Length	7 mm ± 0,5 mm		
Overvoltage Category	III	III	II
Pollution Severity Level	3	2	2
Rated Voltage	250 V (500 V)	320 V (630 V)	630V (1000V)
Rated Impulse Voltage	4 kV (6 kV)	4 kV (6 kV)	4 kV (6 kV)
Rated Insulation Voltage	250 V acc. to EN 60998-1		
Rated Current	25 A		
Torque	0,8 Nm		
Other specifications	Rated values apply to use in combination with 324-STFB(-DS). Values in parentheses apply to use with insulated substrates.		

APPROVALS

	Current [A]	Voltage [V]	Group	AWG	[Nm]
	25	150	B,D	18 - 10	
	20	300	B	26 - 10	0,79
	10	300	D,E	26 - 10	0,79

CONFIGURATIONS

Version	Poles	Item	Article number	Item	Article number	Length (L)	PU
Standard	2	324-STFS/02	72.823.004	324-STFS-DS/02	12.823.017	21,00 mm	1000
Standard	3	324-STFS/03	73.823.004	324-STFS-DS/03	13.823.017	32,00 mm	500
Standard	4	324-STFS/04	74.823.004	324-STFS-DS/04	14.823.017	44,00 mm	500
Standard	5	324-STFS/05	75.823.004	324-STFS-DS/05	15.823.017	55,00 mm	250
Standard	6	324-STFS/06	76.823.004	324-STFS-DS/06	16.823.017	67,00 mm	100
Standard	7	324-STFS/07	77.823.004	324-STFS-DS/07	17.823.017	78,00 mm	75
Standard	8	324-STFS/08	78.823.004	324-STFS-DS/08	18.823.017	90,00 mm	60
Standard	9	324-STFS/09	79.823.004	324-STFS-DS/09	19.823.017	101,00 mm	50
Standard	10	324-STFS/10	80.823.004	324-STFS-DS/10	20.823.017	113,00 mm	50
Standard	11	324-STFS/11	81.823.004	324-STFS-DS/11	21.823.017	124,00 mm	50
Standard	12	324-STFS/12	82.823.004	324-STFS-DS/12	22.823.017	135,00 mm	50



MATERIAL

Moulding	PA, natural, V-2
Comparative Tracking Index	CTI ≥ 600
Insulating Group	I
Temperature Range	-40°C up to 100°C
Screw	M3,5; zinc plated steel, blue passivated
Wire protector	Tin plated tin bronze
Plug	Nickel plated brass
Spring	Stainless steel strip

OPTIONS / ACCESSORIES

- Marking options on and between the screw guides
- Jumper 324-J
- Leading plug for the protective conductor pole