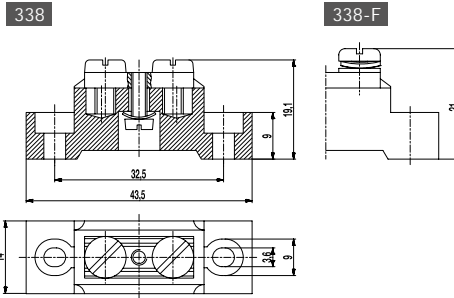
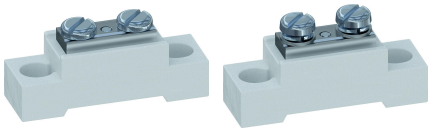


338 / 338-F

Flat screw terminals

Medium-duty version with grooved flat terminals, 1-pole



Standard versions have two mounting holes outside.

GENERAL INFORMATION

No. of poles	1
--------------	---

TECHNICAL DATA

Clamping Range	<i>solid / stranded / AWG</i> 0,5 - 4 mm ² / 0,5 - 1,5 mm ² / 20 - 16 [1][2]
Rated Cross Section	4 mm ²
Wire Stripping Length	10 mm ± 0,5 mm
Rated Insulation Voltage	32 A
Torque	1,2 Nm
Fixing Holes	∅ 3,6 mm
Distance	32,5 mm
Base mounting	Recommendation: Screw M3 with matching washer; max. torque 0.8 Nm; use of an elastic & insulating substrate.
Other specifications	Terminal strips must not be strung together without considering the clearance and creepage distances.

MATERIAL

Base material	Technical ceramics
Comparative Tracking Index	CTI ≥ 600
Insulating Group	I
Temperature Range	-40°C up to 250°C
Spring washer	Zinc plated steel
Screw terminal	Nickel plated brass
Screw	M4; Zinc plated steel
Washer	Zinc plated steel

OPTIONS / ACCESSORIES

- Versions only with washers.

[1] The clamping range for flexible and AWG conductors was determined using ferrules. Use of flexible conductors without ferrules is not recommended.
 [2] Per pole two wires of identical cross-section can be connected.

CONFIGURATIONS

Item	Article number	PU
338	52.636.002	75
338-F	50.636.002	75