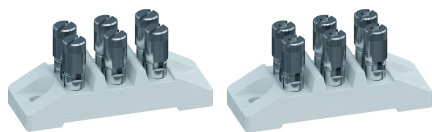


340-M / 340-MU

Double terminals
3 poles



GENERAL INFORMATION

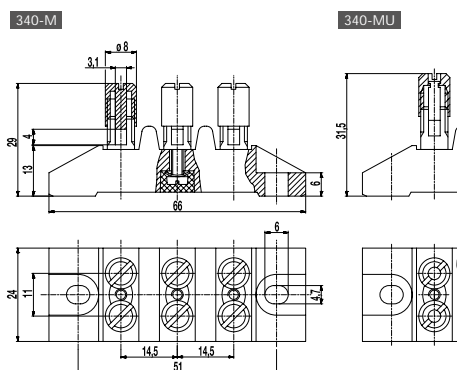
No. of poles 3

TECHNICAL DATA

Clamping Range	<i>solid / stranded / AWG</i> 340-M: 0,2 - 6 mm ² / 0,25 - 4 mm ² / 22 - 12 AWG [1] 340-MU: 0,2 - 6 mm ² / 0,2 - 6 mm ² / 24 - 10 AWG
Rated Cross Section	6 mm ²
Wire Stripping Length	8 mm ± 1 mm
Rated Insulation Voltage	450 V acc. to EN 60998-1
Rated Current	41 A
Torque	2,5 Nm
Fixing Holes	ø 4,7 mm
Distance	51 mm
Base mounting	Recommendation: Screw M4 with matching washer; max. torque 1.5 Nm; use of an elastic & insulating substrate.
Other specifications	Terminal strips must not be strung together without considering the clearance and creepage distances. Rated values apply to use in combination with insulated substrates.

CONFIGURATIONS

Item	Article number	PU
340-M	13.636.011	24
340-MU	23.636.011	24



MATERIAL

Base material	Technical ceramics
Comparative Tracking Index	CTI ≥ 600
Insulating Group	I
Temperature Range	-40°C up to 250°C (Potting compound 120°C)
Mantle terminal	M7; Nickel plated brass
Screw	M3; Zinc plated steel
Washer	Zinc plated steel
Potting compound	Epoxy resin

OPTIONS / ACCESSORIES

- Double terminals with upper parts DF (with reversing lock)

[1] "-M" version: The clamping range for flexible and AWG conductors was determined using ferrules. The use of flexible conductors without ferrules is not recommended.