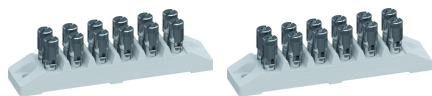
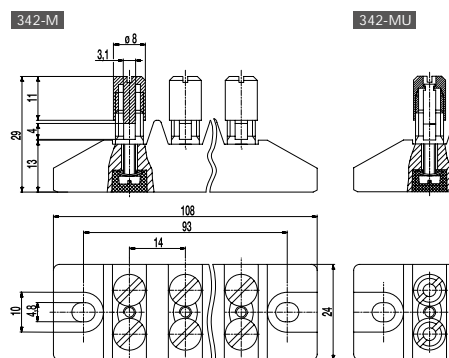


Double terminals
6 poles



No. of poles	6
--------------	---

Clamping Range	<i>solid / stranded / AWG</i> 342-M: 0,2 - 6 mm ² / 0,25 - 4 mm ² / 22 - 12 AWG [1] 342-MU: 0,2 - 6 mm ² / 0,2 - 6 mm ² / 24 - 10 AWG
Rated Cross Section	6 mm ²
Wire Stripping Length	8 mm ± 1 mm
Rated Insulation Voltage	450 V acc. to EN 60998-1
Rated Current	41 A
Torque	2,5 Nm
Fixing Holes	ø 4,7 mm
Distance	93 mm
Base mounting	Recommendation: Screw M4 with matching washer; max. torque 1.5 Nm; use of an elastic & insulating substrate.
Other specifications	Terminal strips must not be strung together without considering the clearance and creepage distances. Rated values apply to use in combination with insulated substrates.



Base material	Technical ceramics
Comparative Tracking Index	CTI \geq 600
Insulating Group	I
Temperature Range	-40°C up to 250°C (Potting compound 120°C)
Mantle terminal	M7; Nickel plated brass
Screw	M3; Zinc plated steel
Washer	Zinc plated steel
Potting compound	Epoxy resin

- Double terminals with upper parts DF (with reversing lock).

[1] "-M" version: The clamping range for flexible and AWG conductors was determined using ferrules. The use of flexible conductors without ferrules is not recommended.

Item	Article number	PU
342-M	13.636.021	13
342-MU	23.636.021	13