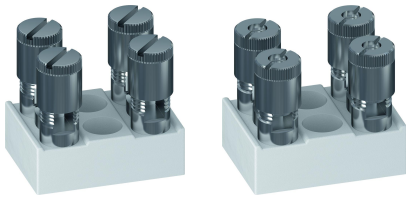


360-K-M / 360-K-MU

Double terminals
Central screw hole, 2-pole



GENERAL INFORMATION

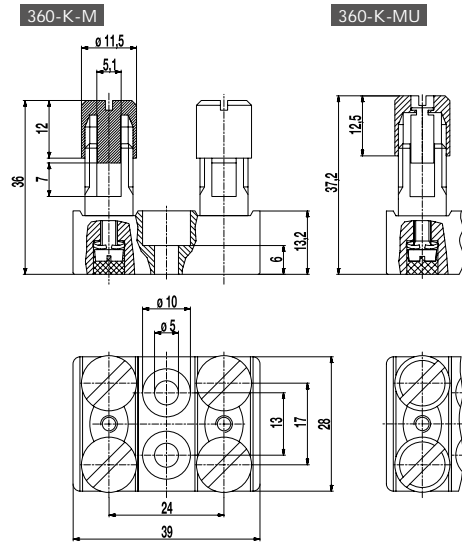
No. of poles 2

TECHNICAL DATA

| | |
|--------------------------|--|
| Clamping Range | <i>solid / stranded / AWG</i> 360-K-M: 2,5 - 16 mm ² / 2,5 - 6 mm ² / 14 - 10 AWG [1] 360-K-MU: 2,5 - 16 mm ² / 10 - 16 mm ² / 8 - 6 AWG |
| Rated Cross Section | 6 mm ² |
| Wire Stripping Length | 12 mm ± 1 mm |
| Rated Insulation Voltage | 750 V acc. to EN 60998-1 |
| Rated Current | 41 A |
| Torque | 3,5 Nm |
| Fixing Holes | ø 5,0 mm |
| Distance | 13 mm |
| Base mounting | Recommendation: Screw M4 with matching washer; max. torque 1.5 Nm; use of an elastic & insulating substrate. |
| Other specifications | Terminal strips must not be strung together without considering the clearance and creepage distances. Rated values apply to use in combination with insulated substrates. |

CONFIGURATIONS

| Item | Article number | PU |
|----------|----------------|----|
| 360-K-M | 14.636.008 | 30 |
| 360-K-MU | 24.636.008 | 30 |



MATERIAL

| | |
|----------------------------|--|
| Base material | Technical ceramics |
| Comparative Tracking Index | CTI ≥ 600 |
| Insulating Group | I |
| Temperature Range | -40°C up to 250°C (Potting compound 120°C) |
| Spring washer | Stainless steel |
| Mantle terminal | Nickel plated brass |
| Screw | M3,5; Zinc plated steel |
| Potting compound | Epoxy resin |

OPTIONS / ACCESSORIES

- Double terminals with upper parts DF (with reversing lock)

[1] "-M" version: The clamping range for flexible and AWG conductors was determined using ferrules. The use of flexible conductors without ferrules is not recommended.