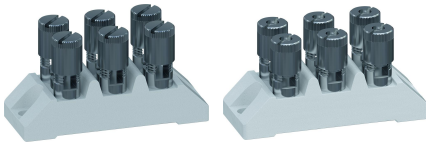


361-M / 361-MU

Double terminals
3 poles



GENERAL INFORMATION

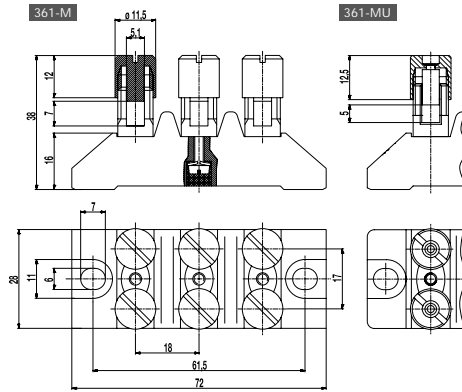
No. of poles 3

TECHNICAL DATA

Clamping Range	<i>solid / stranded / AWG</i> 361-M: 2,5 - 16 mm ² / 2,5 - 6 mm ² / 14 - 10 AWG [1] 361-MU: 2,5 - 16 mm ² / 10 - 16 mm ² / 8 - 6 AWG
Rated Cross Section	16 mm ²
Wire Stripping Length	12 mm ± 1 mm
Rated Insulation Voltage	750 V acc. to EN 60998-1
Rated Current	76 A
Torque	3,5 Nm
Fixing Holes	ø 6 mm
Distance	61,5 mm
Base mounting	Recommendation: Screw M5 with matching washer; max. torque 1.5 Nm; use of an elastic & insulating substrate.
Other specifications	Terminal strips must not be strung together without considering the clearance and creepage distances. Rated values apply to use in combination with insulated substrates.

CONFIGURATIONS

Item	Article number	PU
361-M	14.636.012	16
361-MU	24.636.012	16



MATERIAL

Base material	Technical ceramics
Comparative Tracking Index	CTI ≥ 600
Insulating Group	I
Temperature Range	-40°C up to 250°C (Potting compound 120°C)
Spring washer	Stainless steel
Mantle terminal	M10; Nickel plated brass
Screw	M3,5; Zinc plated steel
Potting compound	Epoxy resin

OPTIONS / ACCESSORIES

- Double terminals with upper parts DF (with reversing lock)

[1] "-M" version: The clamping range for flexible and AWG conductors was determined using ferrules. The use of flexible conductors without ferrules is not recommended.