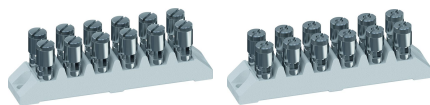


# 363-M / 363-MU

Double terminals  
6 poles

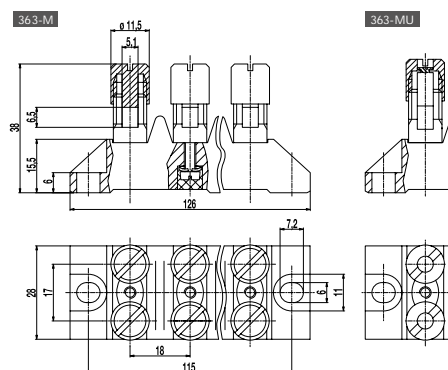


## GENERAL INFORMATION

No. of poles 6

## TECHNICAL DATA

Clamping Range	<i>solid / stranded / AWG</i> 363-M: 2,5 - 16 mm <sup>2</sup> / 2,5 - 6 mm <sup>2</sup> / 14 - 10 AWG [1]  363-MU: 2,5 - 16 mm <sup>2</sup> / 10 - 16 mm <sup>2</sup> / 8 - 6 AWG
Rated Cross Section	6 mm <sup>2</sup>
Wire Stripping Length	12 mm ± 1 mm
Rated Insulation Voltage	750 V acc. to EN 60998-1
Rated Current	41 A
Torque	3,5 Nm
Fixing Holes	ø 6 mm
Distance	115 mm
Base mounting	Recommendation: Screw M5 with matching washer; max. torque 1.5 Nm; use of an elastic & insulating substrate.
Other specifications	Terminal strips must not be strung together without considering the clearance and creepage distances. Rated values apply to use in combination with insulated substrates.



## MATERIAL

Base material	Technical ceramics
Comparative Tracking Index	CTI ≥ 600
Insulating Group	I
Temperature Range	-40°C up to 250°C (Potting compound 120°C)
Spring washer	Stainless steel
Mantle terminal	M10; Nickel plated brass
Screw	M3,5; Zinc plated steel
Potting compound	Epoxy resin

## OPTIONS / ACCESSORIES

- Double terminals with upper parts DF (with reversing lock)

[1] "-M" version: The clamping range for flexible and AWG conductors was determined using ferrules. The use of flexible conductors without ferrules is not recommended.

## CONFIGURATIONS

Item	Article number	PU
363-M	14.636.022	8
363-MU	24.636.022	8