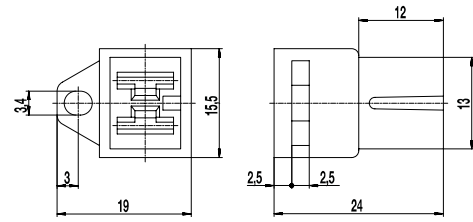
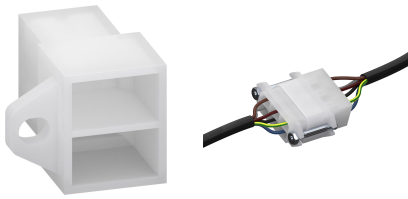


411-BML

Plug receptacle with fastening flanges, for receptacle for tabs 6,3



GENERAL INFORMATION

No. of poles	2
Usable with	Flat plug housing 411-S
Areas of application	for electrical machines, vehicles, appliances and switch gear systems

TECHNICAL DATA

Rated Cross Section	6,0 mm ² / 10 AWG
Overvoltage Category	II
Pollution Severity Level	2
Rated Voltage	400 V
Rated Impulse Voltage	4 kV
Rated Current	20 A: with receptacle 6,3; wire 6,0 mm ² (10 AWG)

MATERIAL

Moulding	PA, natural, V-2
Comparative Tracking Index	CTI ≥ 600
Insulating Group	I
Temperature Range	-40°C up to 100°C

CONFIGURATIONS

Poles	Item	Article number	Length (L)	PU
2	411-BML/02	10.837.011	mm	1000

