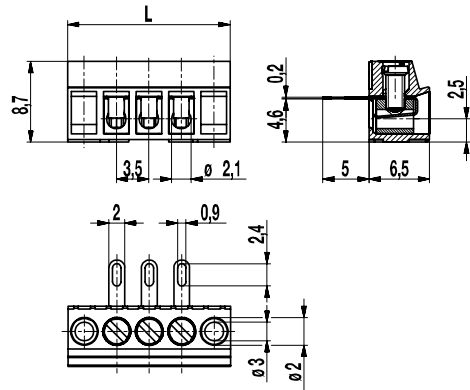
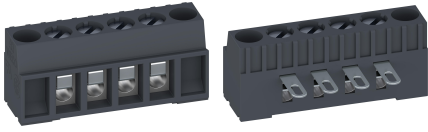


# 931-A-LFDS

Screw/solder terminal strip  
Screw/solder tag connection



## GENERAL INFORMATION

Pitch	3,5 mm
No. of poles	2 - 12

## TECHNICAL DATA

Clamping Range	solid / stranded / AWG		
	0,34 - 1,5 mm <sup>2</sup> / 0,34 - 1 mm <sup>2</sup> / 22 - 16 AWG		
Rated Cross Section	1 mm <sup>2</sup>		
Wire Stripping Length	5 mm ± 0,5 mm		
Overvoltage Category	III	III	II
Pollution Severity Level	3	2	2
Rated Voltage	100 V	160 V	320 V
Rated Impulse Voltage	2,5 kV	2,5 kV	2,5 kV
Rated Insulation Voltage	130 A acc. to EN 60998-1		
Rated Current	4 A		
Torque	0,25 Nm		

## APPROVALS

	Current [A]	Voltage [V]	Group	AWG	[Nm]
	10	300	B	26 - 16	0,23
	10	300	B	26 - 16	0,2

## MATERIAL

Moulding	PA, grey, V-0
Comparative Tracking Index	CTI ≥ 600
Insulating Group	I
Temperature Range	-40°C up to 100°C
Terminal body	Nickel plated brass
Screw	M2; zinc plated steel, blue passivated
Wire protector	Tin plated tin bronze

## OPTIONS / ACCESSORIES

- Marking according to customer requirement
- Self-adhesive marking strip BST-3,50
- Larger number of poles

## CONFIGURATIONS

Version	Poles	Item	Article number	Length (L)	PU
Standard	2	931-A-LFDS/02	20.870.442	14,00 mm	250
Standard	3	931-A-LFDS/03	20.870.443	17,50 mm	100
Standard	4	931-A-LFDS/04	20.870.444	21,00 mm	100
Standard	5	931-A-LFDS/05	20.870.445	24,50 mm	100
Standard	6	931-A-LFDS/06	20.870.446	28,00 mm	100
Standard	7	931-A-LFDS/07	20.870.447	31,50 mm	100
Standard	8	931-A-LFDS/08	20.870.448	35,00 mm	100
Standard	9	931-A-LFDS/09	20.870.449	38,50 mm	100
Standard	10	931-A-LFDS/10	20.870.450	42,00 mm	100
Standard	11	931-A-LFDS/11	20.870.451	45,50 mm	100
Standard	12	931-A-LFDS/12	20.870.452	49,00 mm	100

