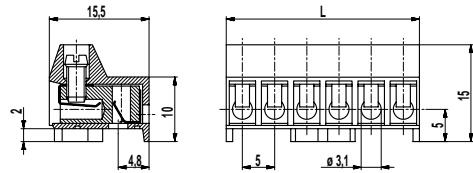
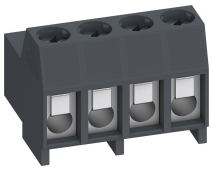


970-FBW-FU-DS

Plug connector
Screw connection, pluggable from the bottom, with supporting ribs



GENERAL INFORMATION

Pitch	5 mm
No. of poles	2 - 12
Usable with	pin strip 971-SLR, 971-SLR-THR

TECHNICAL DATA

Clamping Range	<i>solid / stranded / AWG</i>		
<i>without wire protector</i>	1 - 6 mm ² / 1 - 4 mm ² / 16 - 10 AWG		
<i>with wire protector</i>	0,75 - 4 mm ² / 0,75 - 2,5 mm ² / 18 - 12 AWG		
Rated Cross Section	2,5 mm ²		
Wire Stripping Length	5,5 mm ± 0,5 mm		
Overvoltage Category	III	III	II
Pollution Severity Level	3	2	2
Rated Voltage	250 V	320 V	630 V
Rated Impulse Voltage	4 kV	4 kV	4 kV
Rated Current	6 A		
Torque	0,5 Nm		

APPROVALS

	Current [A]	Voltage [V]	mm ²
	13,5	250	2,5 [1]

[1] Acc. to IEC 60947-7-4 und IEC 60947-1

MATERIAL

Moulding	PA, grey, V-0
Comparative Tracking Index	CTI ≥ 600
Insulating Group	I
Temperature Range	-40°C up to 100°C
Terminal body	Tin plated brass
Screw	M3; zinc plated steel, blue passivated
Wire protector	Tin plated tin bronze
Spring	Stainless strip steel

OPTIONS / ACCESSORIES

- Consecutive numbering
- Special marking according to drawing
- Self-adhesive marking strip BST-5,00
- Pitch of 10 mm for larger clearance and creepage distances
- Version with extended wire entrance
- Double wire protector as bridge
- Without wire protector

CONFIGURATIONS

Poles	Item	Article number	Length (L)	Packaging	PU
2	970-FBW-FU-DS/02	40.873.192	10,00 mm	Box	200
3	970-FBW-FU-DS/03	40.873.193	15,00 mm	Box	200
4	970-FBW-FU-DS/04	40.873.194	20,00 mm	Box	100
6	970-FBW-FU-DS/06	40.873.196	30,00 mm	Box	50
8	970-FBW-FU-DS/08	40.873.198	40,00 mm	Box	50

further number of poles on request

