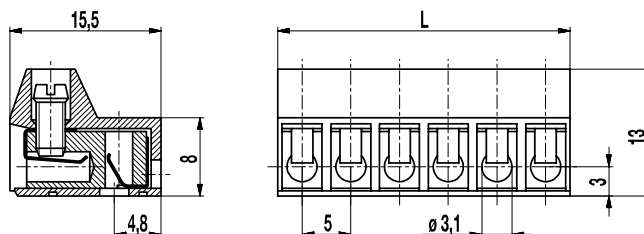
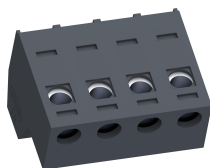


970-FBW(-DS)

Plug connector

Screw connection, pluggable from the bottom





GENERAL INFORMATION

| | |
|--------------|---|
| Pitch | 5 mm |
| No. of poles | 2 - 24 |
| Usable with | pin strips 971-FBWP, 971-SLW, single pins LST-1,3-6,5 |

TECHNICAL DATA

| | | | |
|--------------------------|---|-------|---------------|
| Clamping Range | <i>solid / stranded / AWG</i> | | |
| without wire protector | 1 - 6 mm ² / 1 - 4 mm ² / 16 - 10 AWG | | |
| with wire protector | 0,75 - 4 mm ² / 0,75 - 2,5 mm ² / 18 - 12 AWG | | |
| Rated Cross Section | 2,5 mm ² | | |
| Wire Stripping Length | 5,5 mm ± 0,5 mm | | |
| Overvoltage Category | III | III | II |
| Pollution Severity Level | 3 | 2 | 2 |
| Rated Voltage | 250 V (200 V) | 320 V | 630 V (400 V) |
| Rated Impulse Voltage | 4 kV | 4 kV | 4 kV |
| Rated Current | 6 A | | |
| Torque | 0,5 Nm | | |
| Other specifications | Voltage data in brackets are valid for 13-24 poles types. 2-12 poles types are "no-flame" acc. to glow-wire test. | | |

APPROVALS

| | Current [A] | Voltage [V] | Group | AWG | [Nm] |
|---|-------------|-------------|-------|-----------|------|
|  | 20 | 300 | B | 22-12 [1] | 0,51 |
| | 10 | 300 | D | 22-12 [1] | 0,51 |
|  | 20 | 300 | B | 26 - 12 | 0,51 |
| | 10 | 300 | D, E | 26 - 12 | 0,51 |

[1] Min No. 26 AWG for factory-wiring only

MATERIAL

| | |
|----------------------------|---|
| Moulding | PA, grey, V-0 |
| Comparative Tracking Index | 2-12 poles: CTI ≥ 600; 13-24 poles: CTI 400 |
| Insulating Group | 2-12 poles: I; 13-24 poles: II |
| Temperature Range | -40°C up to 100°C |
| Terminal body | Tin plated brass |
| Screw | M3; zinc plated steel, blue passivated |
| Wire protector | Tin plated tin bronze |
| Spring | Stainless strip steel |

OPTIONS / ACCESSORIES

- Marking according to customer requirement
- Self-adhesive marking strip BST-5,00
- Pitch of 10 mm for larger clearance and creepage distances
- Version with extended wire entrance
- Double wire protector as bridge
- Plug connector 971-RFBS(-DS) with ribs at wire entry and fitting locking plate

CONFIGURATIONS

| Poles | Item | Article number | Item | Article number | Length (L) | Packaging | PU |
|-------|------------|----------------|---------------|----------------|------------|-----------|-----|
| 2 | 970-FBW/02 | 30.873.102 | 970-FBW-DS/02 | 40.873.102 | 10,00 mm | Box | 200 |
| 3 | 970-FBW/03 | 30.873.103 | 970-FBW-DS/03 | 40.873.103 | 15,00 mm | Box | 200 |
| 4 | 970-FBW/04 | 30.873.104 | 970-FBW-DS/04 | 40.873.104 | 20,00 mm | Box | 100 |
| 5 | 970-FBW/05 | 30.873.105 | 970-FBW-DS/05 | 40.873.105 | 25,00 mm | Box | 100 |
| 6 | 970-FBW/06 | 30.873.106 | 970-FBW-DS/06 | 40.873.106 | 30,00 mm | Box | 50 |
| 7 | 970-FBW/07 | 30.873.107 | 970-FBW-DS/07 | 40.873.107 | 35,00 mm | Box | 50 |
| 8 | 970-FBW/08 | 30.873.108 | 970-FBW-DS/08 | 40.873.108 | 40,00 mm | Box | 50 |
| 9 | 970-FBW/09 | 30.873.109 | 970-FBW-DS/09 | 40.873.109 | 45,00 mm | Box | 50 |
| 10 | 970-FBW/10 | 30.873.110 | 970-FBW-DS/10 | 40.873.110 | 50,00 mm | Box | 50 |
| 11 | 970-FBW/11 | 30.873.111 | 970-FBW-DS/11 | 40.873.111 | 55,00 mm | Box | 50 |
| 12 | 970-FBW/12 | 30.873.112 | 970-FBW-DS/12 | 40.873.112 | 60,00 mm | Box | 50 |

further number of poles on request

