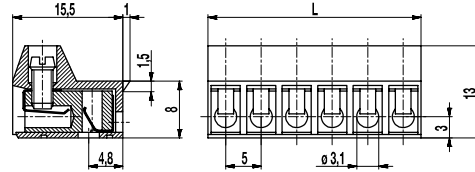
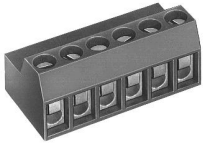


970-NFBW(-DS)

Plug connector
Screw connection, with latch nose



GENERAL INFORMATION

Pitch	5 mm
No. of poles	2 - 12
Usable with	pin strip 971-FBWP, 971-SLW, single pins LST-1,3x6,5

TECHNICAL DATA

Clamping Range	<i>solid / stranded / AWG</i>		
without wire protector	1 - 6 mm ² / 1 - 4 mm ² / 16 - 10 AWG		
with wire protector	0,75 - 4 mm ² / 0,75 - 2,5 mm ² / 18 - 12 AWG		
Rated Cross Section	2,5 mm ²		
Wire Stripping Length	5,5 mm ± 0,5 mm		
Overvoltage Category	III	III	II
Pollution Severity Level	3	2	2
Rated Voltage	250 V	320 V	630 V
Rated Impulse Voltage	4 kV	4 kV	4 kV
Rated Insulation Voltage	250 V acc. to EN 60998-1		
Rated Current	6 A		
Torque	0,5 Nm		

APPROVALS

	Current [A]	Voltage [V]	Group	AWG	[Nm]
	20	300	B	22-12 [1]	0,51
	10	300	D	22-12 [1]	0,51
	20	300	B	26 - 12	0,4
	10	300	D, E	26 - 12	0,4

MATERIAL

Moulding	PA, grey, V-0
Comparative Tracking Index	CTI ≥ 600
Insulating Group	I
Temperature Range	-40°C up to 100°C
Terminal body	Tin plated brass
Screw	M3; zinc plated steel, blue passivated
Wire protector	Tin plated tin bronze
Spring	Stainless strip steel

OPTIONS / ACCESSORIES

- Consecutive numbering
- Special marking according to drawing
- Self-adhesive marking strip BST-5,00
- Pitch of 10 mm for larger clearance and creepage distances
- Version with extended wire entrance
- Double wire protector as bridge

[1] Min No. 26 AWG for factory-wiring only

CONFIGURATIONS

Poles	Part number	Article number	Part number	Article number	Length (L)	Packaging	PU
2	970-NFBW/02	30.873.142	970-NFBW-DS/02	40.873.142	10,00 mm	Box	200
3	970-NFBW/03	30.873.143	970-NFBW-DS/03	40.873.143	15,00 mm	Box	200
4	970-NFBW/04	30.873.144	970-NFBW-DS/04	40.873.144	20,00 mm	Box	100
5	970-NFBW/05	30.873.145	970-NFBW-DS/05	40.873.145	25,00 mm	Box	100
6	970-NFBW/06	30.873.146	970-NFBW-DS/06	40.873.146	30,00 mm	Box	50

