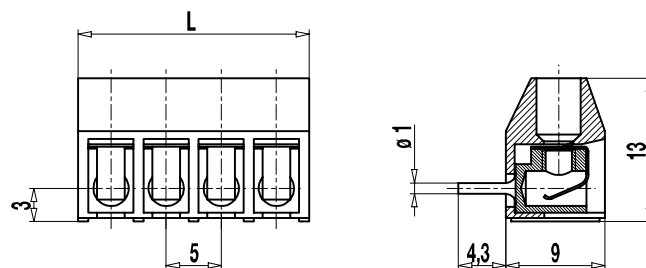
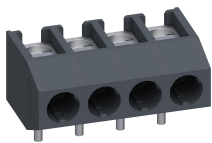


# 971-FB

Socket terminal strip

Plug connection, plug-in direction vertical to PCB





## GENERAL INFORMATION

Pitch	5 mm
No. of poles	2 - 32
Usable with	plug connector 971-SV

## TECHNICAL DATA

Overvoltage Category	III	III	II
Pollution Severity Level	3	2	2
Rated Voltage	250 V	320 V	630 V (500 V)
Rated Impulse Voltage	4 kV	4 kV	4 kV
Rated Current	6 A		
Hole in PCB	ø 1,3 mm		
Other specifications	Voltage data in brackets are valid for 9-32 poles types. 2-8 poles types are "no-flame" acc. to glow-wire test.		

## APPROVALS

	Current [A]	Voltage [V]	Group	AWG	[Nm]
	20	300	B		
	10	300	D		
	20	300	B		
	10	300	D, E		

## MATERIAL

Moulding	PA, grey, V-0
Comparative Tracking Index	2-8 poles: CTI ≥ 600; 9-32 poles: CTI 400
Insulating Group	2-8 poles: I; 9-32 poles: II
Temperature Range	-40°C up to 100°C
Terminal body	Tin plated brass
Solder pin	ø 1 mm; tin plated brass
Spring	Stainless strip steel

## OPTIONS / ACCESSORIES

- Marking according to customer requirement
- Self-adhesive marking strip BST-5,00
- Pitch of 10 mm for larger clearance and creepage distances
- Other solder pin lengths on request
- Version with lateral latching elements

## CONFIGURATIONS

Poles	Item	Article number	Length (L)	Packaging	PU
2	971-FB/02	85.872.152	11,00 mm	Box	250
3	971-FB/03	85.872.153	16,00 mm	Box	250
4	971-FB/04	85.872.154	21,00 mm	Box	200
5	971-FB/05	85.872.155	26,00 mm	Box	100
6	971-FB/06	85.872.156	31,00 mm	Box	100
7	971-FB/07	85.872.157	36,00 mm	Box	100
8	971-FB/08	85.872.158	41,00 mm	Box	100
9	971-FB/09	85.872.159	46,00 mm	Box	100
10	971-FB/10	85.872.160	51,00 mm	Box	100
11	971-FB/11	85.872.161	56,00 mm	Box	100
12	971-FB/12	85.872.162	61,00 mm	Box	100

further number of poles on request

