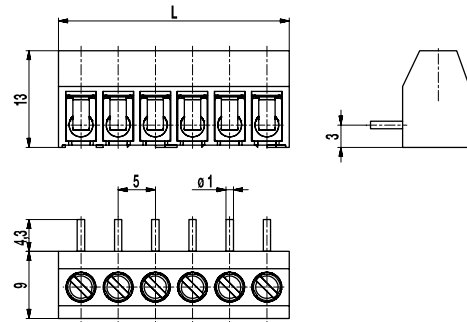
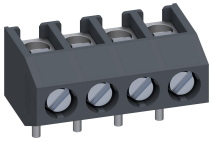


971(-DS)

PCB connector

Screw connection, wire entrance vertical to PCB



GENERAL INFORMATION

Pitch	5 mm
No. of poles	2 - 32

TECHNICAL DATA

Clamping Range	<i>solid / stranded / AWG</i>		
<i>without wire protector</i>	1 - 6 mm ² / 1 - 2,5 mm ² / 16 - 12 AWG		
<i>with wire protector</i>	0,75 - 4 mm ² / 0,75 - 2,5 mm ² / 18 - 12 AWG		
Rated Cross Section	2,5 mm ²		
Wire Stripping Length	5,5 mm ± 0,5 mm		
Overvoltage Category	III	III	II
Pollution Severity Level	3	2	2
Rated Voltage	250 V	320 V	630 V (500 V)
Rated Impulse Voltage	4 kV	4 kV	4 kV
Rated Current	24 A		
Hole in PCB	ø 1,3 mm		
Torque	0,5 Nm		
Other specifications	Voltage data in brackets are valid for 9-32 poles types. 2-8 poles types are "no-flame" acc. to glow-wire test.		

APPROVALS

	Current [A]	Voltage [V]	Group	AWG	[Nm]
	20	300	B	22-12 [1]	0,51
	10	300	D	22-12 [1]	0,51
	20	300	B	26 - 12	0,51
	10	300	D, E	26 - 12	0,51

[1] 26 AWG min for factory-wiring only

MATERIAL

Moulding	PA, grey, V-0
Comparative Tracking Index	2-8 poles: CTI ≥ 600; 9-32 poles: CTI 400
Insulating Group	2-8 poles: I; 9-32 poles: II
Temperature Range	-40°C up to 100°C
Terminal body	Tin plated brass
Screw	M3; zinc plated steel, blue passivated
Solder pin	ø 1 mm; tin plated brass
Wire protector	Tin plated tin bronze

OPTIONS / ACCESSORIES

- Marking according to customer requirement
- Self-adhesive marking strip BST-5,00
- Version with extended wire entrance
- Version with test holes, see 971-HM(-DS)
- Double wire protector as bridge

CONFIGURATIONS

Poles	Item	Article number	Item	Article number	Length (L)	Packaging	PU
2	971/02	10.872.102	971-DS/02	20.872.102	11,00 mm	Box	250
3	971/03	10.872.103	971-DS/03	20.872.103	16,00 mm	Box	250
4	971/04	10.872.104	971-DS/04	20.872.104	21,00 mm	Box	200
5	971/05	10.872.105	971-DS/05	20.872.105	26,00 mm	Box	100
6	971/06	10.872.106	971-DS/06	20.872.106	31,00 mm	Box	100
7	971/07	10.872.107	971-DS/07	20.872.107	36,00 mm	Box	100
8	971/08	10.872.108	971-DS/08	20.872.108	41,00 mm	Box	100
9	971/09	10.872.109	971-DS/09	20.872.109	46,00 mm	Box	100
10	971/10	10.872.110	971-DS/10	20.872.110	51,00 mm	Box	100
11	971/11	10.872.111	971-DS/11	20.872.111	56,00 mm	Box	100
12	971/12	10.872.112	971-DS/12	20.872.112	61,00 mm	Box	100

further number of poles on request

