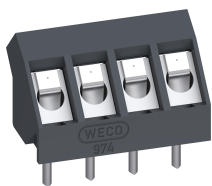


974-FB

Socket terminal strip
Plug connection 45°-angle to PCB






GENERAL INFORMATION

Pitch	5 mm
No. of poles	2 - 26
Usable with	plug connector 951-SV

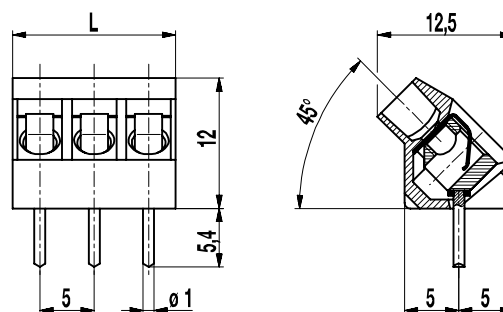
TECHNICAL DATA

Overvoltage Category	III	III	II
Pollution Severity Level	3	2	2
Rated Voltage	160 V	160 V	320 V
Rated Impulse Voltage	2,5 kV	2,5 kV	2,5 kV
Rated Current	6 A		
Hole in PCB	ø 1,3 mm		
Other specifications	Rated voltage adapted to counterpart 951-SV(-DS)		

APPROVALS

	Current [A]	Voltage [V]	Group	AWG	[Nm]
	20	300	B		
	10	300	D		
	20	300	B		
	10	300	D, E		
	Current [A]	Voltage [V]	mm²		
	13,5	160 [1]			

[1] Acc. to IEC 60947-7-4 und IEC 60947-1



MATERIAL

Moulding	PA, grey, V-0
Comparative Tracking Index	CTI ≥ 600
Insulating Group	I
Temperature Range	-40°C up to 100°C
Terminal body	Tin plated brass
Solder pin	ø 1 mm; tin plated copper
Spring	Stainless strip steel

OPTIONS / ACCESSORIES

- Consecutive numbering
- Special marking according to drawing
- Self-adhesive marking strip BST-5,00
- Pitch of 10 mm for larger clearance and creepage distances
- Other solder pin lengths on request
- Version with lateral latching elements
- With base plate, please see 974-BP

CONFIGURATIONS

Poles	Item	Article number	Length (L)	Packaging	PU
2	974-FB/02	90.874.032	10,00 mm	Box	250
3	974-FB/03	90.874.033	15,00 mm	Box	250
4	974-FB/04	90.874.034	20,00 mm	Box	200
5	974-FB/05	90.874.035	25,00 mm	Box	100
6	974-FB/06	90.874.036	30,00 mm	Box	100
7	974-FB/07	90.874.037	35,00 mm	Box	100
8	974-FB/08	90.874.038	40,00 mm	Box	100
9	974-FB/09	90.874.039	45,00 mm	Box	100
10	974-FB/10	90.874.040	50,00 mm	Box	100
11	974-FB/11	90.874.041	55,00 mm	Box	100
12	974-FB/12	90.874.042	60,00 mm	Box	100

further number of poles on request

