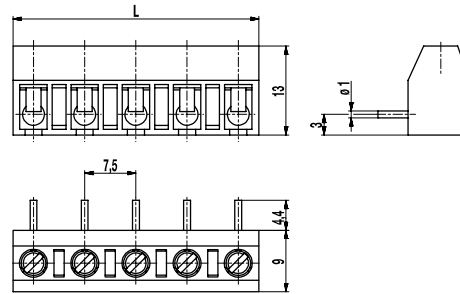
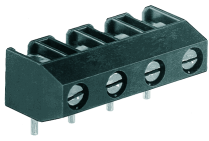


977-OPSG(-DS)

PCB connector

Screw connection, wire entrance vertical to PCB



GENERAL INFORMATION

Pitch	7,5 mm
No. of poles	2 - 19

TECHNICAL DATA

Clamping Range	<i>solid / stranded / AWG</i>		
<i>without wire protector</i>	1 - 6 mm ² / 1 - 2,5 mm ² / 16 - 12 AWG		
<i>with wire protector</i>	0,75 - 4 mm ² / 0,75 - 2,5 mm ² / 18 - 12 AWG		
Rated Cross Section	2,5 mm ²		
Wire Stripping Length	5,5 mm ± 0,5 mm		
Overvoltage Category	III	III	II
Pollution Severity Level	3	2	2
Rated Voltage	500 V (400 V)	630 V	1000 V (630V)
Rated Impulse Voltage	6 kV	6 kV	6 kV
Rated Current	24 A		
Hole in PCB	ø 1,3 mm		
Torque	0,5 Nm		
Other specifications	Rated voltage in brackets applies to 9-19-pole connectors, "no-flame" according to glow wire test applies to 2-8-pole connectors.		

APPROVALS

	Current [A]	Voltage [V]	Group	AWG	[Nm]
	15	300	B	22-12 [1]	0,51
	20	300	B	26 - 12	0,51
	10	300	D, E	26 - 12	0,51
	Current [A]	Voltage [V]	mm ²		
	24	450	2,5 [2]		

CONFIGURATIONS

Poles	Part number	Article number	Part number	Article number	Length (L)	Packaging	PU
2	977-OPSG/02	10.872.352	977-OPSG-DS/02	20.872.352	13,50 mm	Box	250
3	977-OPSG/03	10.872.353	977-OPSG-DS/03	20.872.353	21,00 mm	Box	250
4	977-OPSG/04	10.872.354	977-OPSG-DS/04	20.872.354	28,50 mm	Box	200
5	977-OPSG/05	10.872.355	977-OPSG-DS/05	20.872.355	36,00 mm	Box	100
6	977-OPSG/06	10.872.356	977-OPSG-DS/06	20.872.356	43,50 mm	Box	100

MATERIAL

Moulding	PA, grey, V-0
Comparative Tracking Index	2-8 poles: CTI ≥ 600; 9-19 poles: CTI 250
Insulating Group	2-8 poles: I; 9-19 poles: IIIa
Temperature Range	-40°C up to 100°C
Terminal body	Tin plated brass
Screw	M3; zinc plated steel, blue passivated
Solder pin	ø 1 mm; tin plated brass
Wire protector	Tin plated tin bronze

OPTIONS / ACCESSORIES

- Consecutive numbering
- Special marking according to drawing
- Self-adhesive marking strip BST-7,50

[1] Min No. 26 AWG for factory-wiring only
 [2] Acc. to IEC 60947-7-4 und IEC 60947-1

