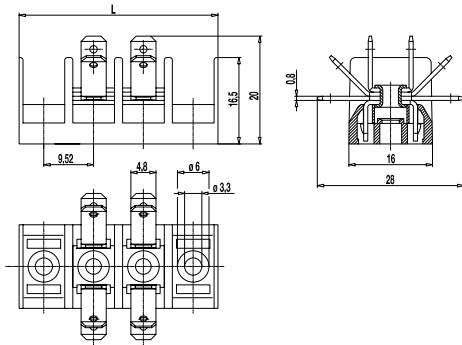
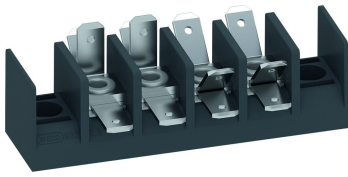


## 982-F

Tab/screw connector blocks  
with tabs 4,8 or screw connection



Tab/screw connector block 982-F in 9,52 mm pitch is based on our proven 98.. series (see Catalogue 4 "Pitch 7,5 mm").

It features a 4.8 mm tab connector in star-shaped arrangement and is available in 2- to 24-pole design for a maximum of six tab connectors or alternatively one screw connector per pole.

The compartments on both extremities of the block can serve for mounting on a substrate. Upon request, other compartments can remain empty for mounting purposes.

#### Installation note:

Since the bottom is not closed, the connector should be mounted on an isolating substrate/surface. Alternatively, our marking strip BST-983-F can be used for this purpose.

Due to the large variety of different types, listing numbers and prices of the various articles is not possible. When inquiring or ordering products with uniform assembly, stating the number of poles and the assembly number is sufficient. For mixed assemblies, we require an exemplary scheme including the orientation of asymmetrical assemblies, stating the number of desired poles and the assembly of each pole with assembly number.

### General Information

Pitch	9,52 mm
No. of poles	2 - 24



### Technical Data

Clamping Range	<i>solid / flexible / AWG</i> 0,75 - 2,5 mm <sup>2</sup> / 0,75 - 2,5 mm <sup>2</sup> / 18 - 12 AWG
Rated Cross Section	2,5 mm <sup>2</sup> [1]
Wire Stripping Length	8,5 mm
Overvoltage Category	III
Pollution Severity Level	3
Rated Voltage	320 V
Rated Impulse Voltage	4 kV
Rated Insulation Voltage	450 V acc. to EN 60998-1
Rated Current	15 A: with receptacle 4,8; wire 2,5 mm <sup>2</sup> (14 AWG)
Torque	0,8 Nm
Other specifications	For screw connectors, two leads of identical cross-section can be connected per pole.

### Material

Moulding	PA, grey, V-0
Comparative Tracking Index	CTI ≥ 600
Insulating Group	I
Temperature Range	-40°C up to 100°C
Terminal Body	Nickel plated brass
Tab	Nickel plated brass
Screw	M3,5; zinc plated steel, blue passivated
Tubular rivet	Tin plated copper

### Approvals

	Current [A]	Voltage [V]	Group	AWG	[Nm]
	20	300	B	20 - 12	0,79
	15	300	B	20 - 12	0,79
	10	300	D,E	20 - 12	0,79

### Options / Accessories

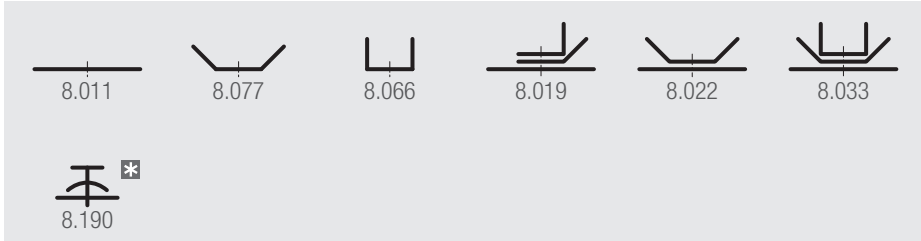
- Consecutive numbering
- Version for printed circuits (with solder connection), see type 983-FS/-FD
- Crosshead screws
- Fastening pole position can be freely selected

[1] Screw side

# 982-F

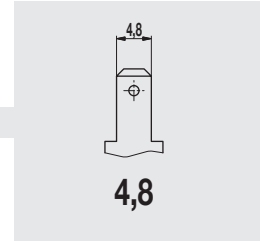
Tab/screw connector blocks  
Assembly options and order information

## Assembly options



\* Standard design as slotted screw, crosshead screws upon request

## Tab size



Tab size  
**4,8**  
(not applicable, if screw connection 8.190 only)

No. of poles  
**02**  
to  
**24**

Assembly option  
Please enter here the desired assembly type number.

If you order various sizes, please enclose drawing and enter here: **MIX**

**982-F-4,8/** [ ] - [ ]

## Example ordering scheme for mixed assembly ("MIX")

	8.019
	8.011
	8.022
	8.033
	8.190
	8.066

When inquiring or ordering products for uniform assembly, stating the above designation is sufficient.

For mixed assembly ("MIX" as part of the type designation), we additionally need a drawing according to the example on the left.

The drawing must state the desired number of poles, the assembly of each pole and the assembly number.