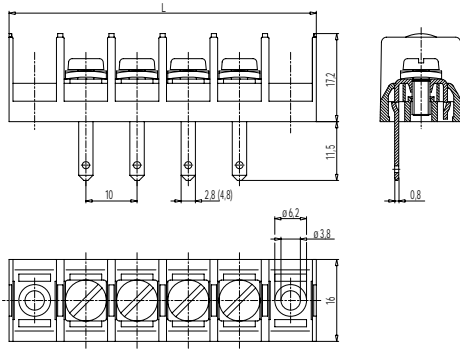
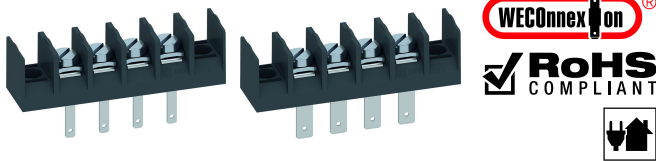


983-MF-2,8/-4,8

Tab/screw connector blocks
with tabs



Tab/screw connector blocks 983-MF-2,8 and 983-MF-4,8 in 10 mm pitch are available in 2- to 12-pole design and can be mounted side-by-side in nominal pitch. These connectors are based on our series 983 terminal strips.

The lead connection is designed as head contact terminal with M3,5 screws. Screws and square washers are movably connected. The square washers are mounted in a non-twist arrangement. For an easier connection of the lead, the washer automatically moves up when the screw is loosened.

One tab connection per pole with widths of 2,8 or 4,8 mm is located on the solder/tab side. That way, current transmission to other components is possible without using printed circuits.

Part Numbers

No. of poles	983-MF-2,8	983-MF-4,8	Length	PU
2	40.873.804	42.873.804	40,00	100
3	40.873.805	42.873.805	50,00	100
4	40.873.806	42.873.806	60,00	100
5	40.873.807	42.873.807	70,00	100
6	40.873.808	42.873.808	80,00	100
7	40.873.809	42.873.809	90,00	50
8	40.873.810	42.873.810	100,00	50
9	40.873.811	42.873.811	110,00	50
10	40.873.812	42.873.812	120,00	50
11	40.873.813	42.873.813	130,00	50
12	40.873.814	42.873.814	140,00	50

further number of poles on request

General Information

Pitch	10 mm
No. of poles	2 - 12
Areas of application	Wall bushings



Technical Data

Clamping Range	<i>solid / flexible / AWG</i> 0,5 - 2,5 mm ² / 0,5 - 2,5 mm ² / 20 - 12 AWG		
Rated Cross Section	2,5 mm ² [1]		
Wire Stripping Length	8,5 mm		
Overvoltage Category	III	III	II
Pollution Severity Level	3	2	2
Rated Voltage	320 V (500 V)	320 V (630 V)	630 V (1000V)
Rated Impulse Voltage	4 kV (6 kV)	4 kV (6 kV)	4 kV (6 kV)
Rated Insulation Voltage	450 V acc. to EN 60998-1		
Rated Current	6 A: with receptacle 2,8; wire 1,0 mm ² (16 AWG) 16 A: with receptacle 4,8; wire 2,5 mm ² (14 AWG)		
Torque	1,2 Nm		
Other specifications	Per pole two wires of identical cross-section can be connected. Voltage data in brackets are valid for version with tabs 2,8 mm. Indicated rated voltages refer to applications with insulation receptacles.		

Material

Moulding	PA, grey, V-0
Comparative Tracking Index	CTI ≥ 600
Insulating Group	I
Temperature Range	-40°C up to 100°C
Terminal Body	Nickel plated brass
Tab	Nickel plated brass
Screw	M4; zinc plated steel, blue passivated

Approvals

	Current [A]	Voltage [V]	Group	AWG	[Nm]
	15	300	B	20 - 12	1,13 [2]
	15 10	300 300	B D,E	20 - 12 20 - 12	1,13 [3] 1,13 [3]

Options / Accessories

- Consecutive numbering
- Special marking according to drawing
- Self-adhesive marking strip BST-10,00
- Insulation receptacles ISO
- Crosshead screws on request
- Tab versions available instead of screw connections
- Bushing and mounting bases or backwalls are available upon request

[1] Screw side

[2] For type 983-MF-2,8 is applicable: 300 V / B / 7 A / 1,13 Nm

[3] For type 983-MF-2,8 is applicable: 300 V / B,D,E / 6 A / 1,13 Nm